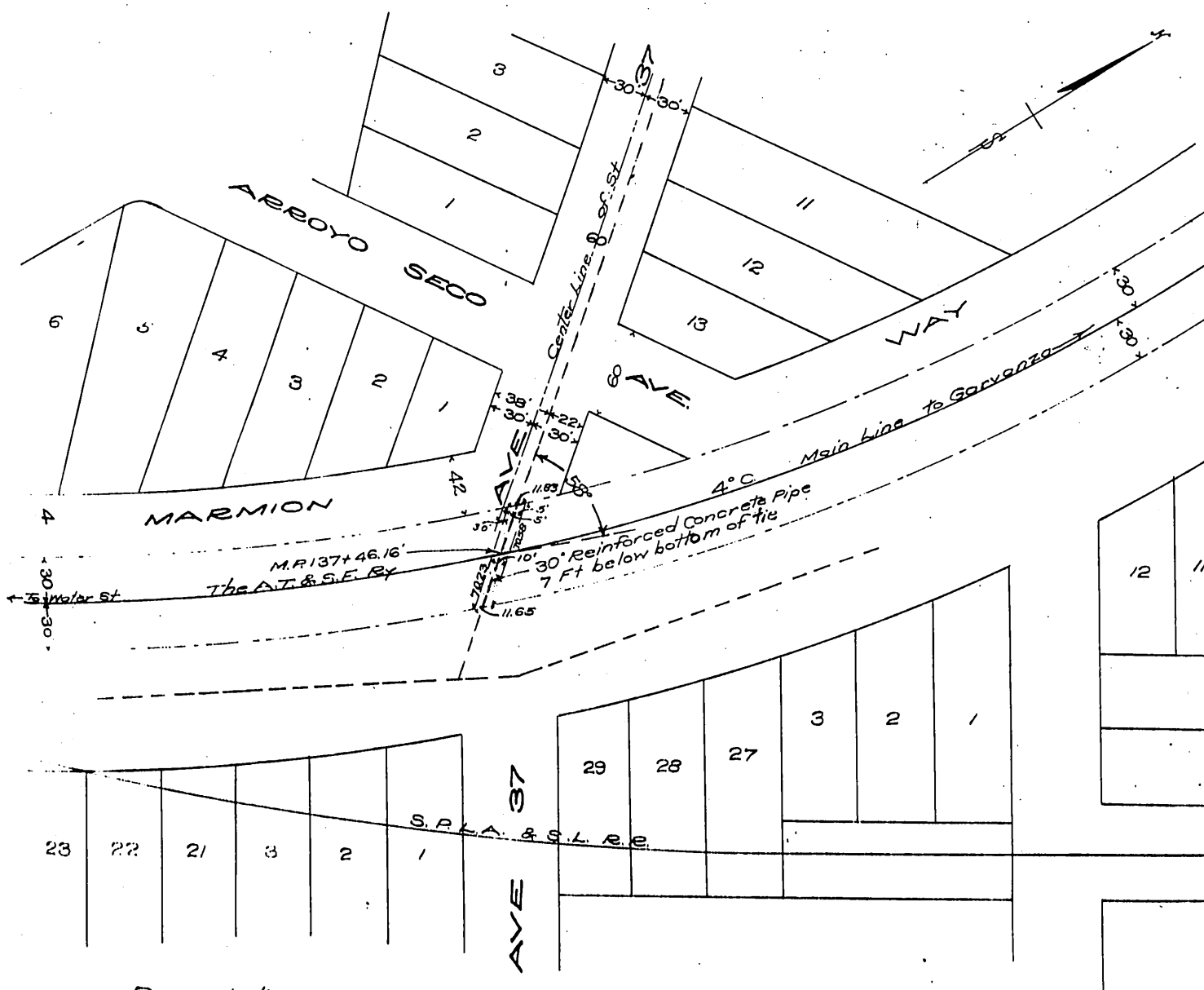


The Atchison, Topeka and Santa Fe Ry. Co.
to
City of Los Angeles

2171
243

Exhibit "A"
Attached to a contract between
The A.T. & S.F. Ry. Co. and
City of Los Angeles
Los Angeles, Cal., Correct as to description.
May 7th 1910 E. J. Arey
Scale, 1"=100' Engineer Grand Division



Description:-

30 inch reinforced concrete storm sewer, crossing under The A. T. & S. F. Ry. Co's main track at M.P. 137+46.16, shown dotted red

Note:-

Land, over which easement is to be granted to the City of Los Angeles shown yellow

At Los Angeles, Los Angeles @, Cal.

Engineer Grand Division's Drawing # 75-8766

D. 16-30

Shit OK
17 OK

Recorded Oct 11 1910.

comp. H.A.T.