

DM 4302-58

58

3

Ernest G. Richter -to- Pacific Electric Land Co.
Nannie Richter

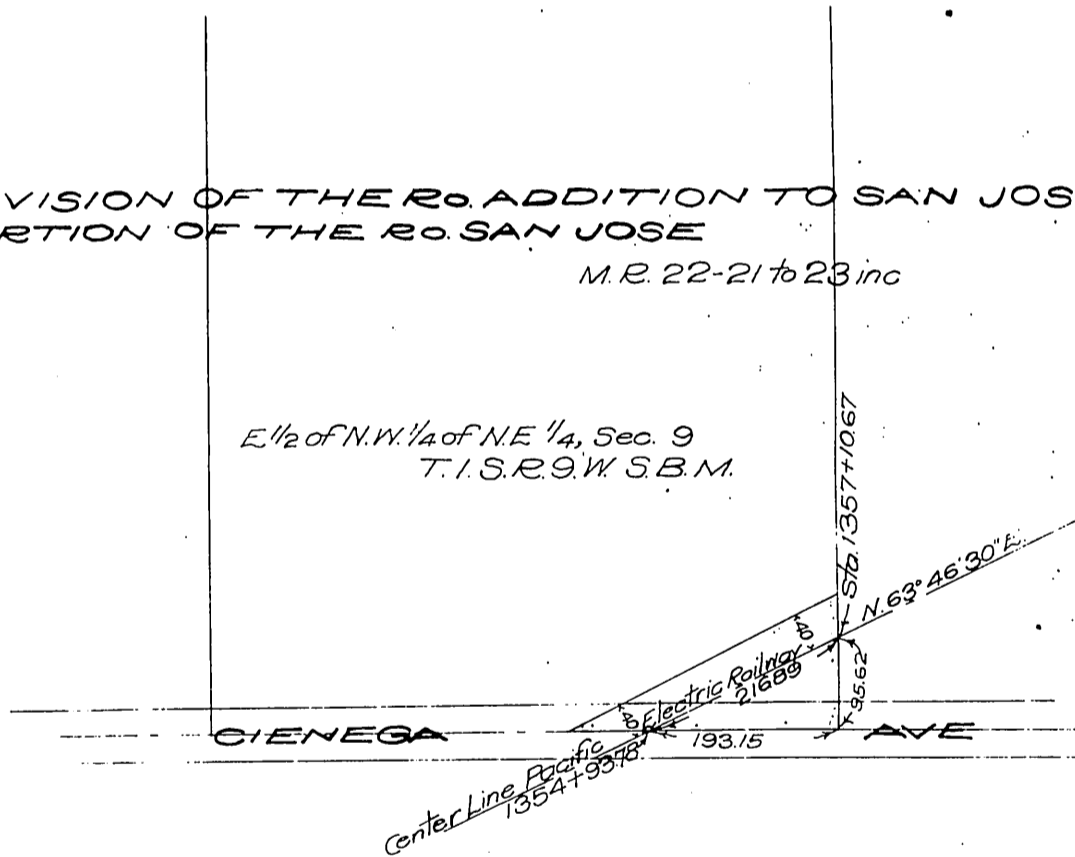


Scale 1 inch = 200 Feet

SUBDIVISION OF THE R.O. ADDITION TO SAN JOSE AND
A PORTION OF THE R.O. SAN JOSE

M.R. 22-21 to 23 inc

E 1/2 of N.W. 1/4 of NE 1/4, Sec. 9
T.1.S.R.9.W.S.B.M.



Recorded Sep. 13. 1910

1113

W. O. A.

D. 4302