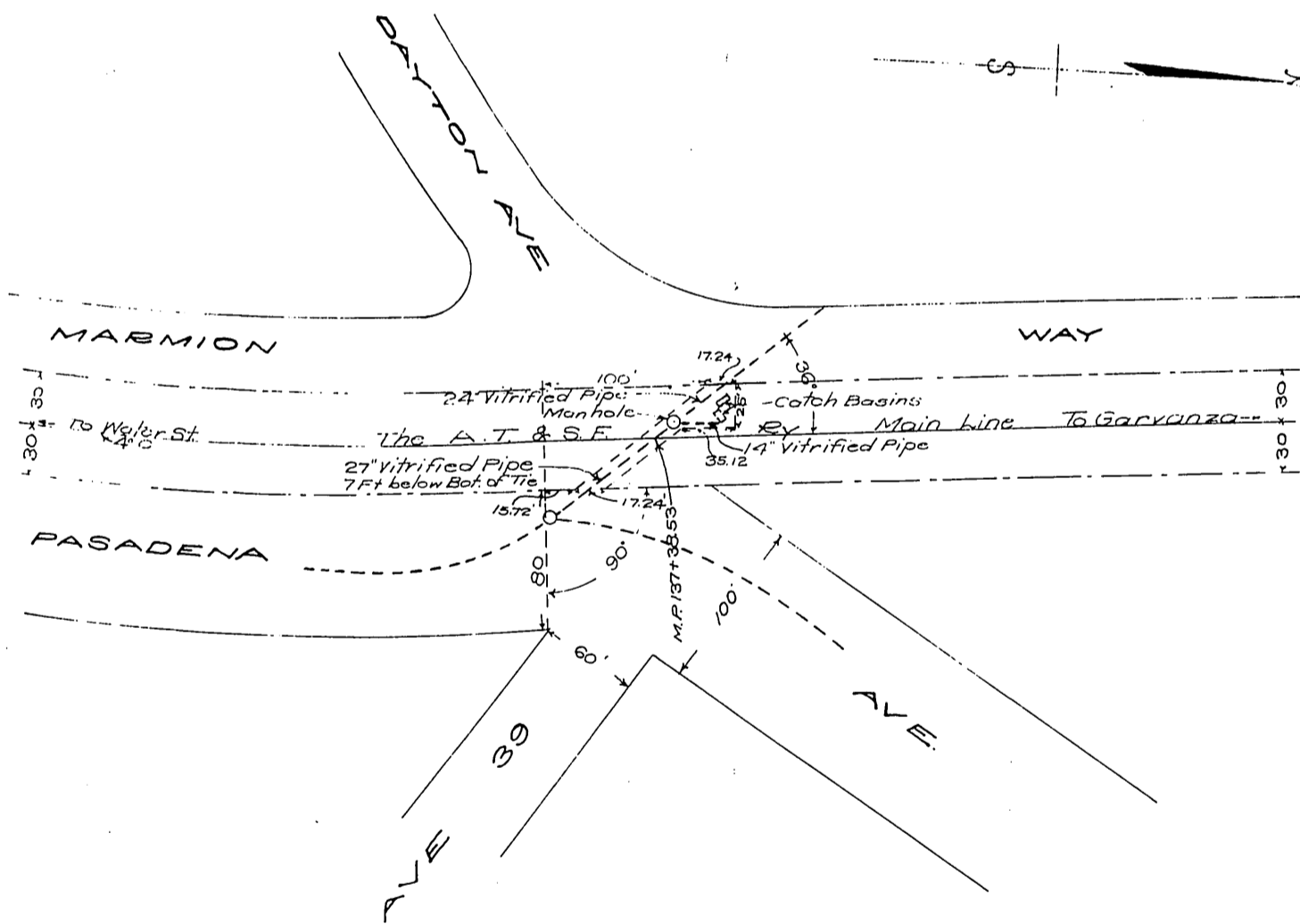


The A.T. & S.F. Ry. Co.  
City of Los Angeles

Exhibit 'A'  
Attached to a contract between  
The A.T. & S.F. Ry. Co. and  
City of Los Angeles  
Los Angeles, Cal., Correct as to Description  
May 7<sup>th</sup> 1910 R. J. Arvey  
Engineer Grand Division  
Scale, 1"=100'



Description

14 inch, 24 inch, and 27 inch vitrified pipe storm sewers, manhole and two catch basins, shown dotted red.

Note:-

Land, over which easement is to be granted to the City of Los Angeles, shown yellow

At Los Angeles, Los Angeles Co., Cal. Engineer Grand Division's Drawing #76-8767