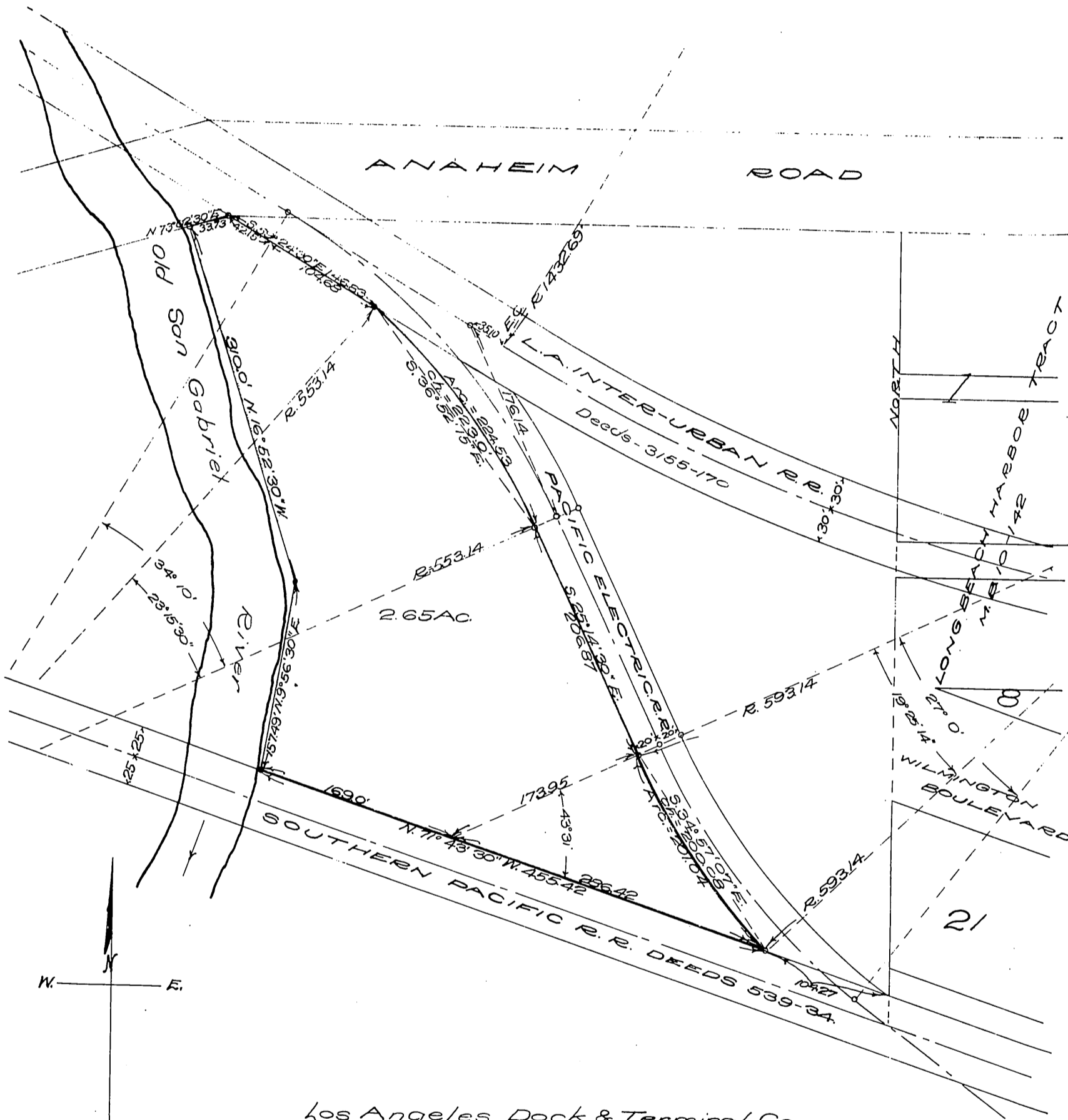


Los Angeles Dock and Terminal Co.
to
Chris F. Capen.



Los Angeles Dock & Terminal Co.
 Map Showing Property
 Contracted to
 - C.E. Capen -
 Scale: 1" = 100'
 Said Property being Located in the City of
 Long Beach Los Angeles County California
 Los Angeles, Cal., October, 25, 1910.
 Arthur L. Sonderegger
 Chief Engineer

F.B. 29-73, Calc. Book-1-236.

Recorded Nov. 25 1910

Comp. H.C.T.