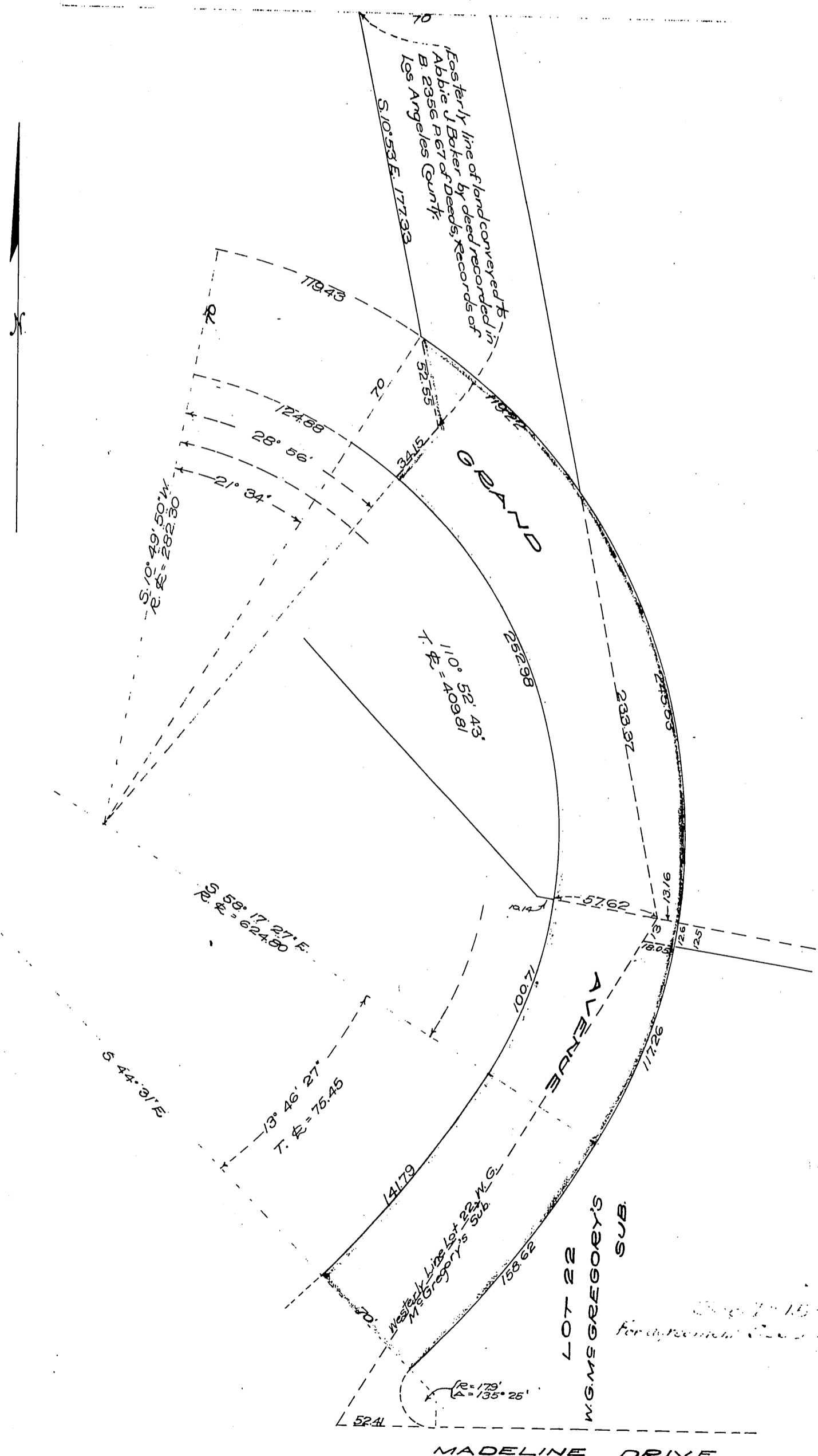


Lillis Beach
Adelphi Beach
By Ernest H. Ashwood thru City in 1910

to City of Pasadena

Map
Dedicating a portion of
GRAND AVENUE
in the
City of Pasadena Calif.
Scale 1 in. = 60 ft.



Recorded Dec 16, 1910.

A. J. Sht. #28

Comp. H.C.T.