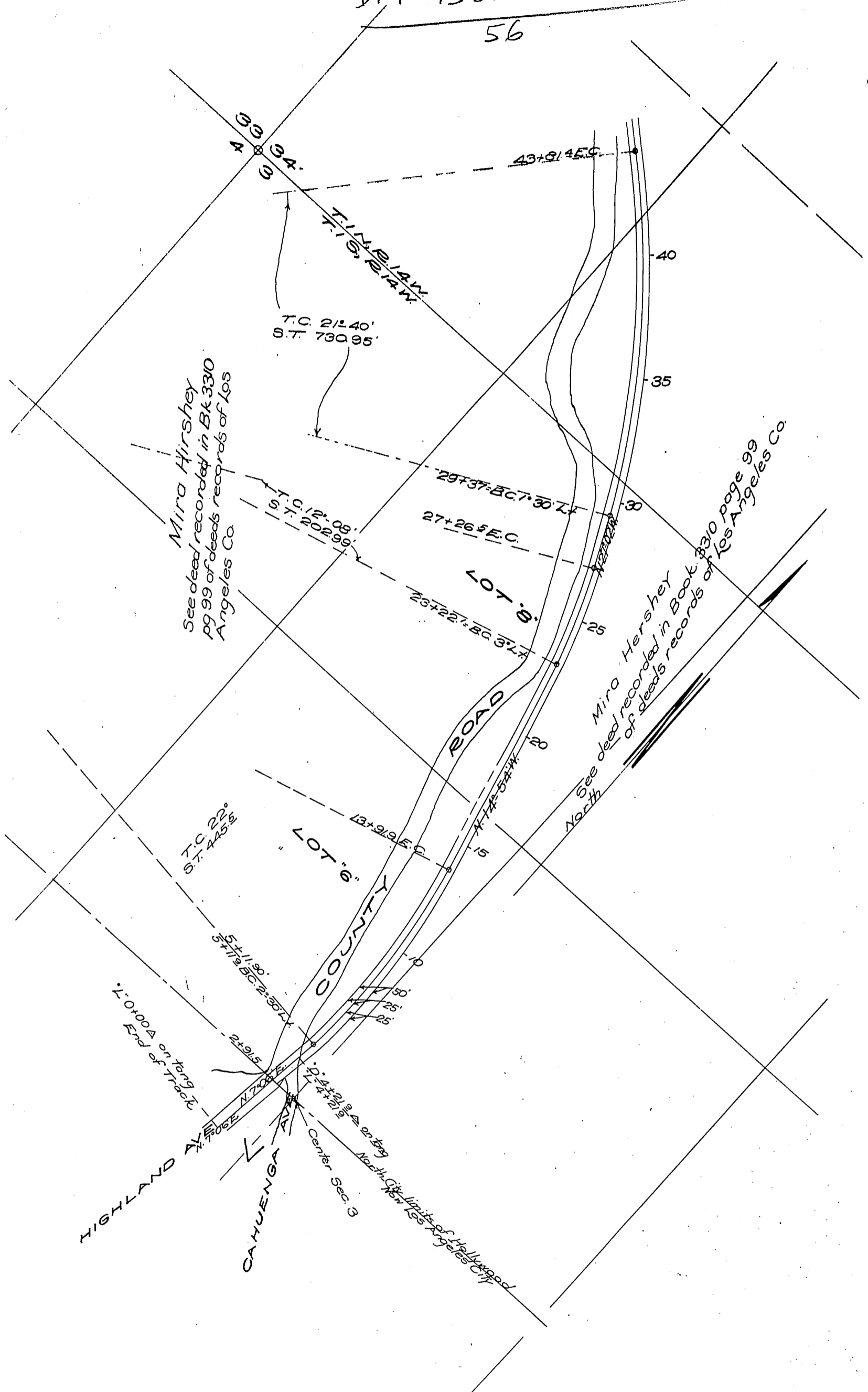


56



Plot
 Showing location of
LAND LINE
 for proposed Railway
 from Hollywood to Lenkershim
 in the

Compiled from plot made by R. J. Weir
 Asst Engr.

County of Los Angeles State of California
 Scale 400 feet to one inch
 "L" line from "L" Sta 0 to "L" Sta 4+21.9 = ("D" Sta 4+21.9)
 "D" line from "D" Sta 4+21.9 = ("L" Sta 4+21.9) to "D" Sta 66+45.2 = ("L" Sta 65.89.3)
 "L" line from "L" Sta 65+89.3 = ("D" Sta 66+45.2) to "L" Sta 139+39.9