

DM 4391-5

63

5

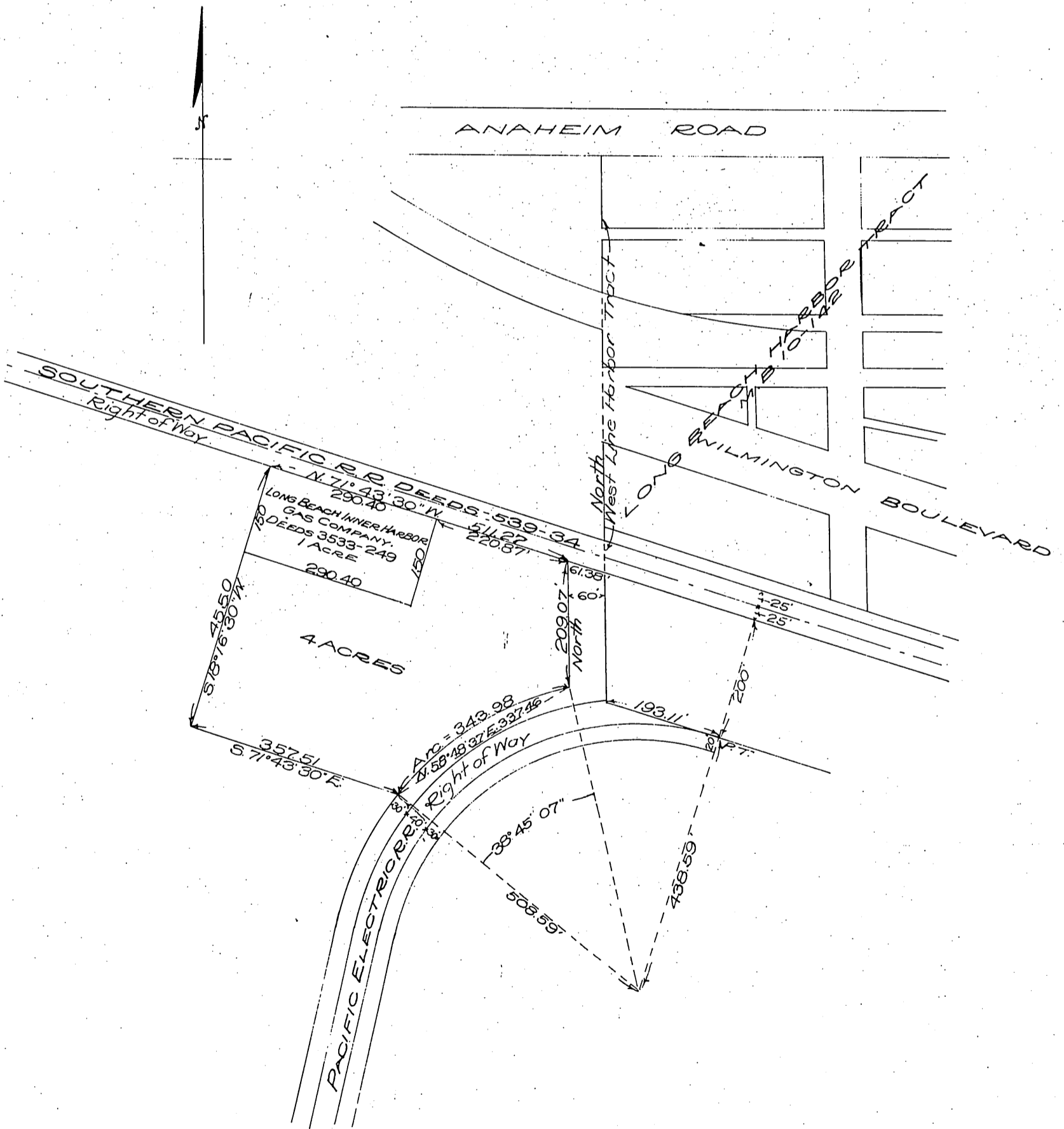
63

Los Angeles Dock and Terminal Co.
— to —
A. E. Murphy

LOS ANGELES DOCK & TERMINAL CO.
MAP SHOWING PROPERTY
CONTRACTED TO
SOUTHERN CALIFORNIA EDISON COMPANY
SCALE 1" = 200'

Said Property being located in the City of
Long Beach Los Angeles County, California.
Los Angeles Cal, October, 5, 1910.

Arthur L. Sonderegger
Chief Engineer.



Calc. Book-1-228, F.B. 4-55

Recorded Nov. 23 1910

Comp. H.C.T.