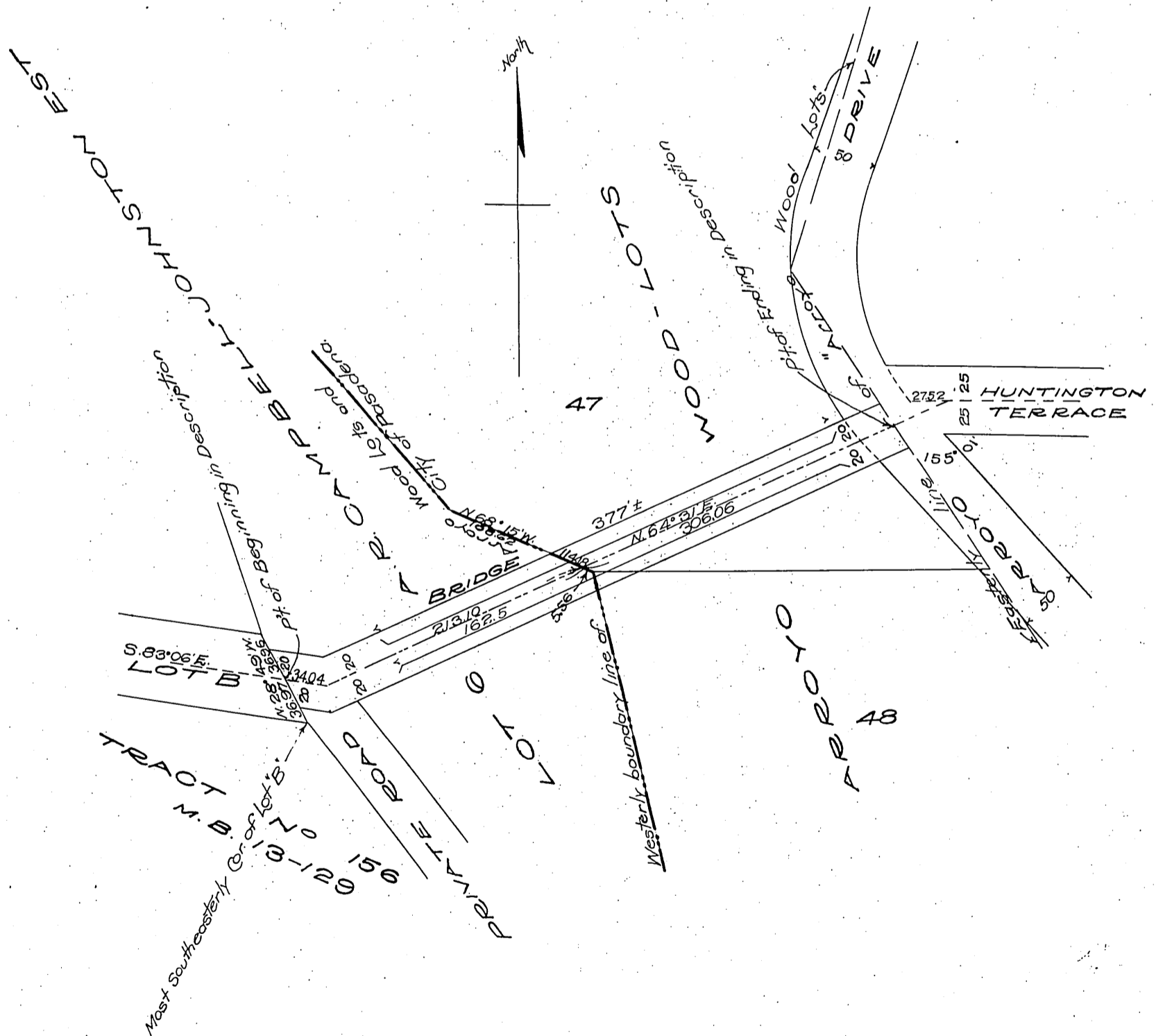


1175

San Rafael Ranch Co
-to-
County of Los Angeles

PLAT - To accompany Deed from San Rafael Ranch Company and San Rafael Heights Improvement Association to the County of Los Angeles and the City of Pasadena, for a Forty-Ft. Right of Way for Road and Bridge purposes

Clarence P. Day,
Civil Engineer
Scale 1 in = 100 Ft.



See D:1786

A 51

A 19

Recorded Jan. 30. 1911.

Comp. HCT. H.