

DM 4429-33

N.B. Harmon -to- Claude M. Hart  
 Nellie A Harmon

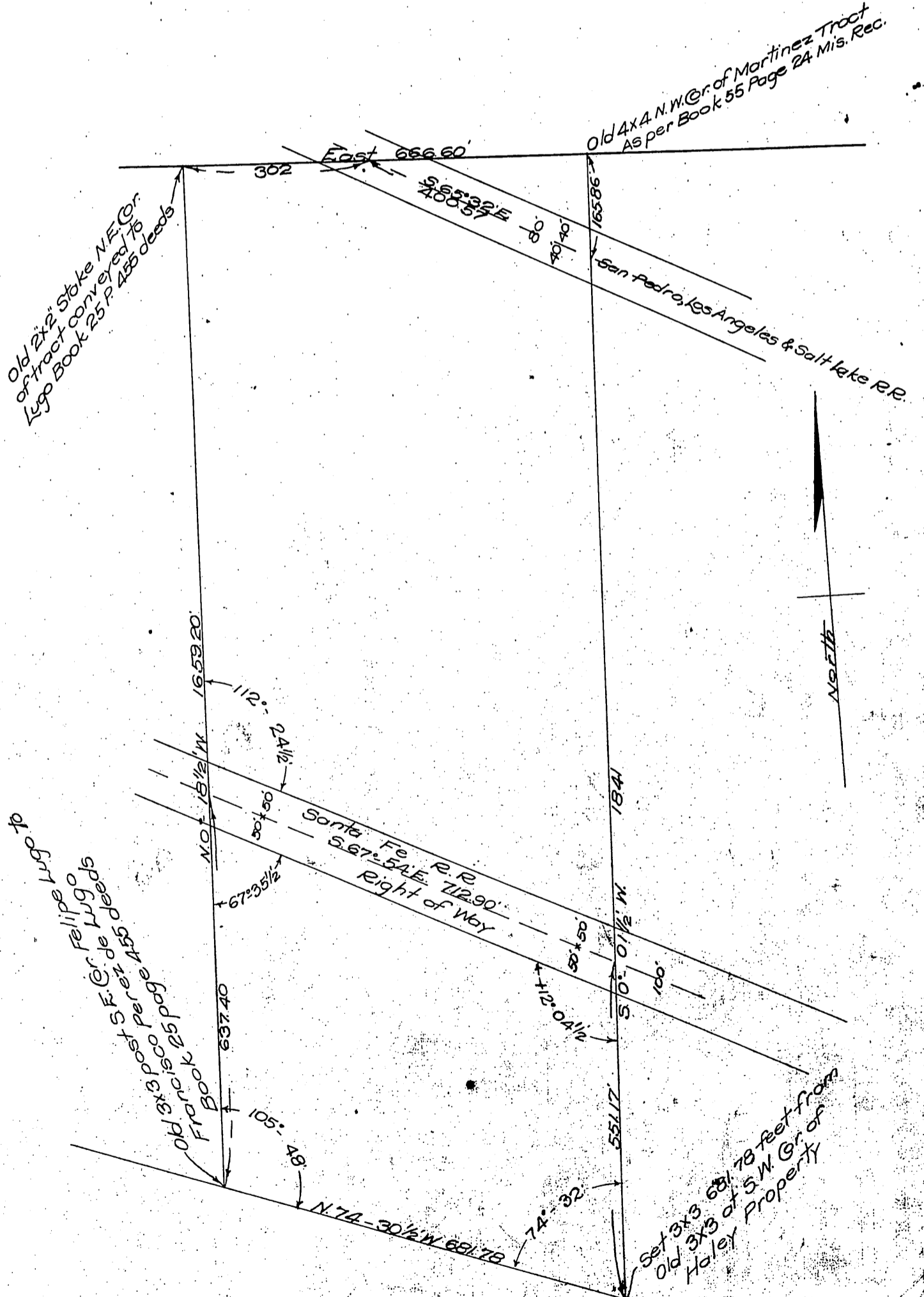
33

15x81

Map of a portion of the  
 Rancho San Antonio in the  
 City of Los Angeles, and City of Vernon  
 County of Los Angeles, California  
 also known as the Haley Tract

Total Area in Haley Tract 26.58 Acres.  
 less Area right of Way S.P.L.A. & Salt Lake R.R. = 0.73 Ac's  
 " " " " " Santa Fe R.R. 1.63 "  
 Total 2.36 Ac.  
 Net Area 24.22 Ac.

Surveyed in October 1906  
 by V. J. Rowan Surveyor  
 Scale 200 feet to one inch  
 bearings Calculated from  
 the bearing of North line



This is to Certify that on the 13<sup>th</sup> day of November 1906 the undersigned made the foregoing measurements to show Connections of Santa Fe R. R. right of way with Haley property  
 V. J. Rowan Surveyor  
 F. W. Marsh  
 C. E.

Recorded Dec 30, 1910

D.4429