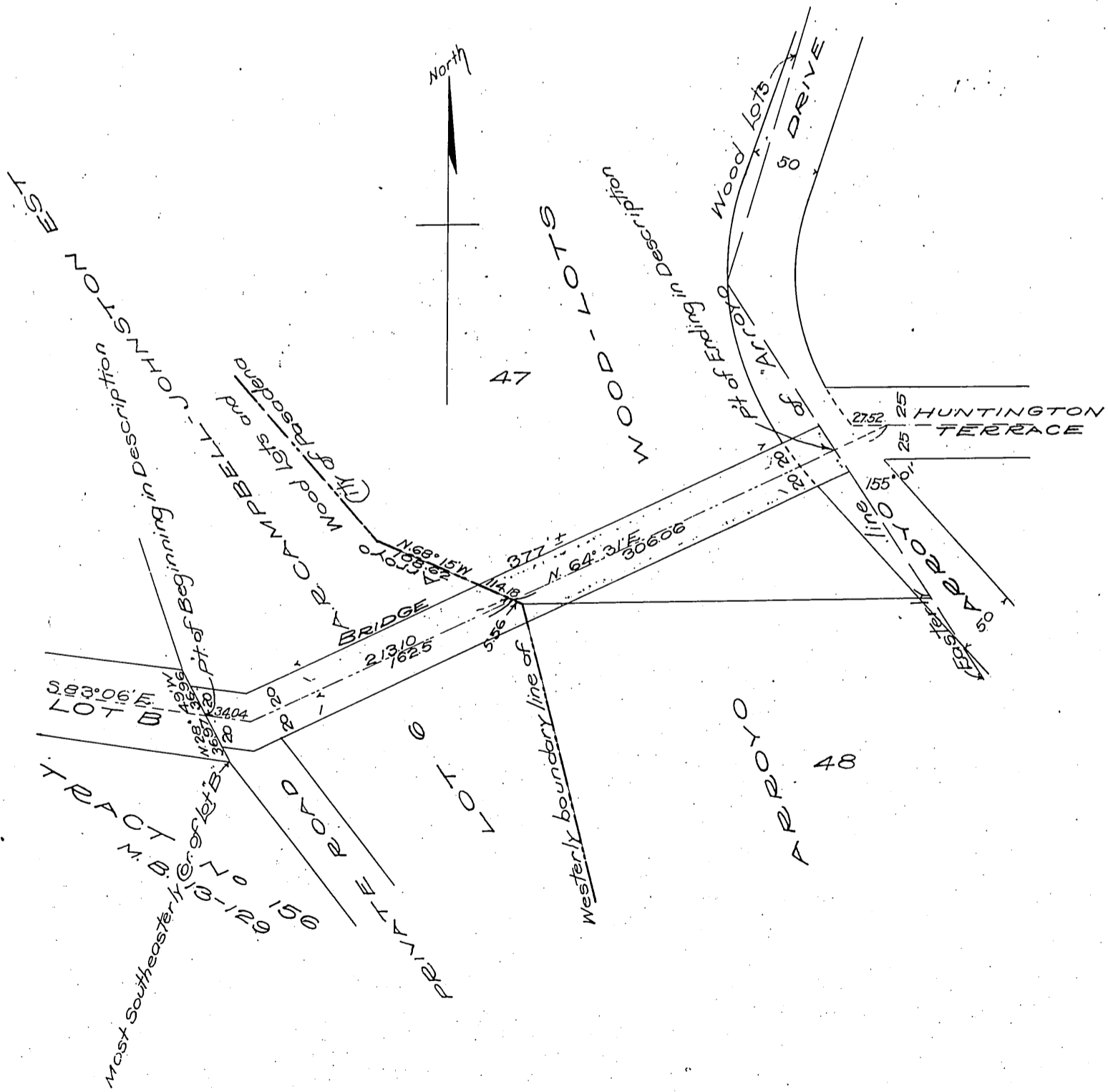


San Rafael Heights Improvement Association
County of Los Angeles

PLAT - To accompany Deed from San Rafael Ranch
Company and San Rafael Heights Improvement
Association to the County of Los Angeles and the
City of Pasadena, for a Forty-Ft Right of Way
for Road and Bridge purposes.

Clarence F. Day
Civil Engineer
Scale 1 in = 100 Ft.



See Plat 177

A 75

Recorded Jan. 30. 1911

Sheet 8

Comp. H.C.T.