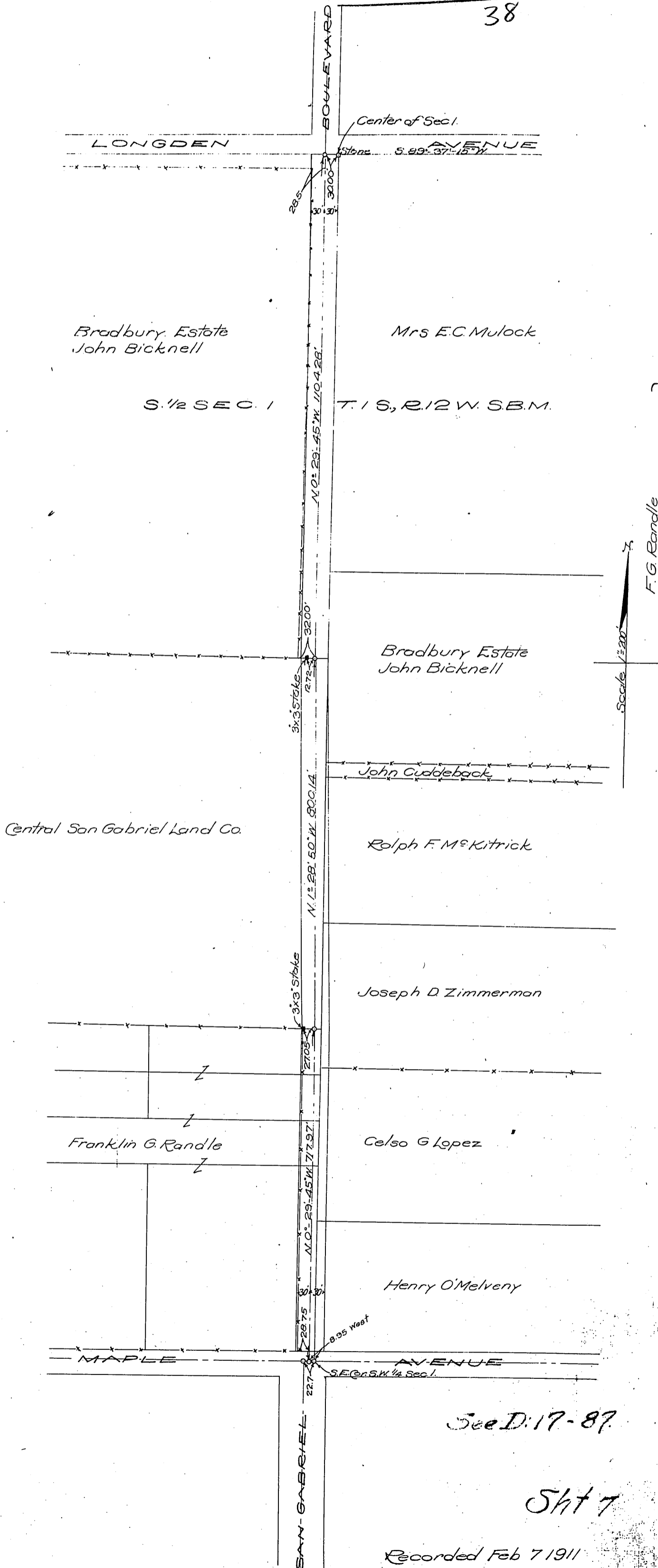


DM 4466-86

8B



- F. G. Randle
- John Francis Randle
- Joseph D. Zimmerman
- Jennie Zimmerman
- Celso G. Lopez
- Central San Gabriel Land Co.
- H. W. O'Melveny
- John D. Bicknell
- R. F. McKitrick
- Mrs. R. F. McKitrick
- John P. Cuddeback
- Charles Francis Smith

to County of Los Angeles

See D: 17-87

Sh 7

Recorded Feb 7 1911

D 4466

Comp. H.C.T. + H