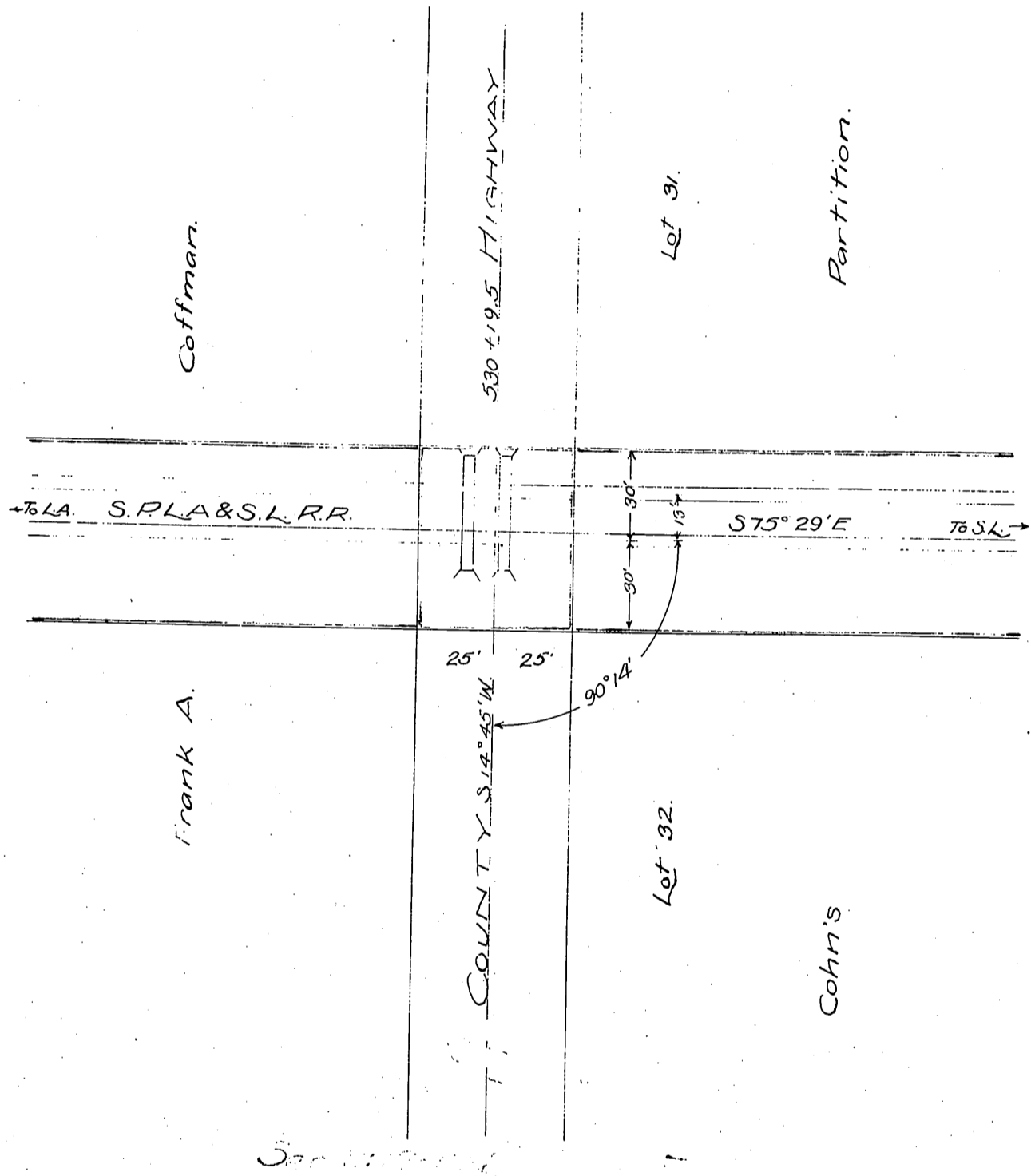
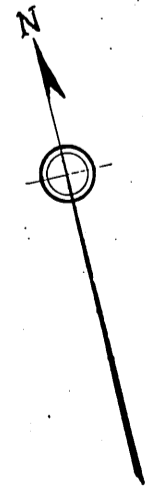


San Pedro, Los Angeles & Salt Lake Railroad Co.  
to  
County of Los Angeles.



"EXHIBIT A"  
**S.P.L.A. & S.L.R.R.**  
 LOS ANGELES DIVISION  
 MAP OF EASEMENT FOR HIGHWAY  
 COUNTY OF LOS ANGELES  
 PICO, CAL.  
 SCALE 1 IN. = 50 FT.  
 APPROVED DEC. 15, 1910.

EM. JESSUP  
 E.M. OF W.



County Highway changed to San Gabriel Blvd. D: 49-23 H: 3-35-306  
 San Gabriel Blvd. changed to Rosemead Blvd. ~ D: 49-273, Min Bk. 227-166