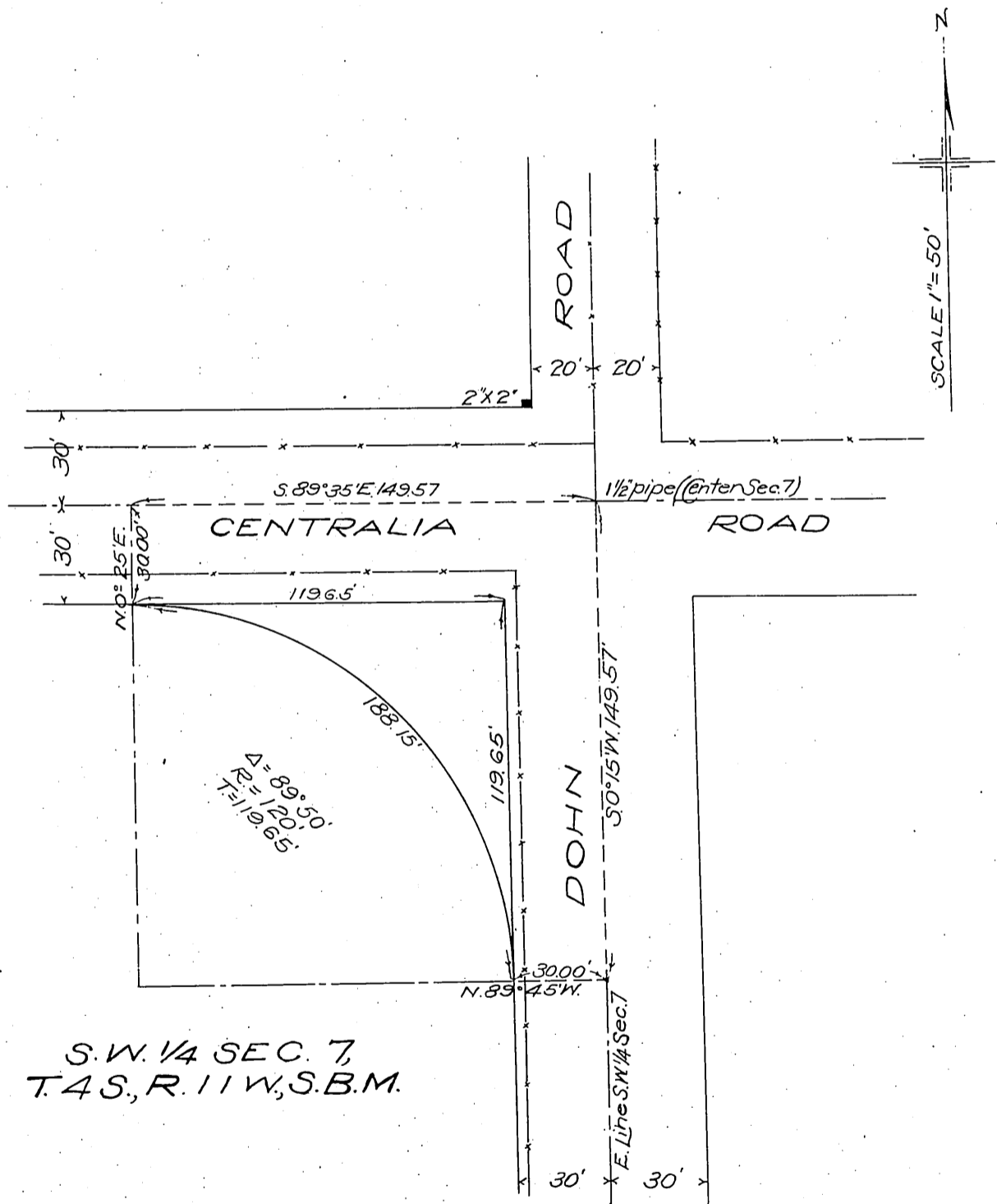


DM 4515-152

54

152

The Merchants National Bank of Los Angeles
to
County of Los Angeles.



S.W. 1/4 SEC. 7,
T.4S., R.11W., S.B.M.

Ben T. Bying
Downey, Norwalk & Orange County Line Road.
#19

Recorded Apr. 3, 1911

Comp. L.G.

D:4515