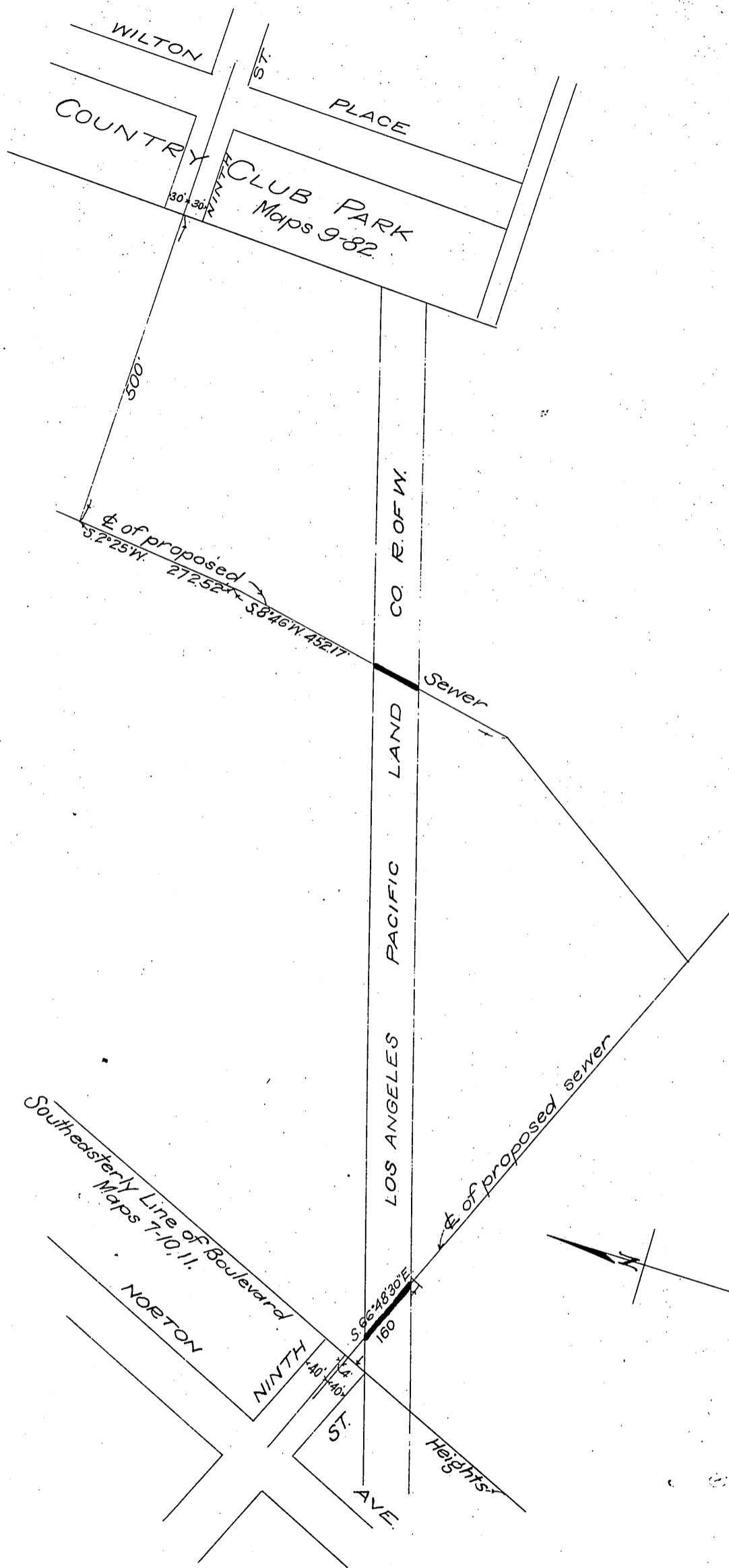


Los Angeles Pacific Land Co.
- to -
City of Los Angeles.



D:16-77

City of Los Angeles
HOLLYWOOD MAIN SEWER
SECTION 1

PLAN SHOWING RIGHT OF WAY FOR PROPOSED SEWER ACROSS
RIGHT OF WAY OF LOS ANGELES PACIFIC LAND CO.
SCALE 1"=200'
Drawn by Hartley
April 18, 1911
Note: Red lines indicate Sewer Rights of Way

Recorded May 11, 1911.

D:4556 amp. HCT.