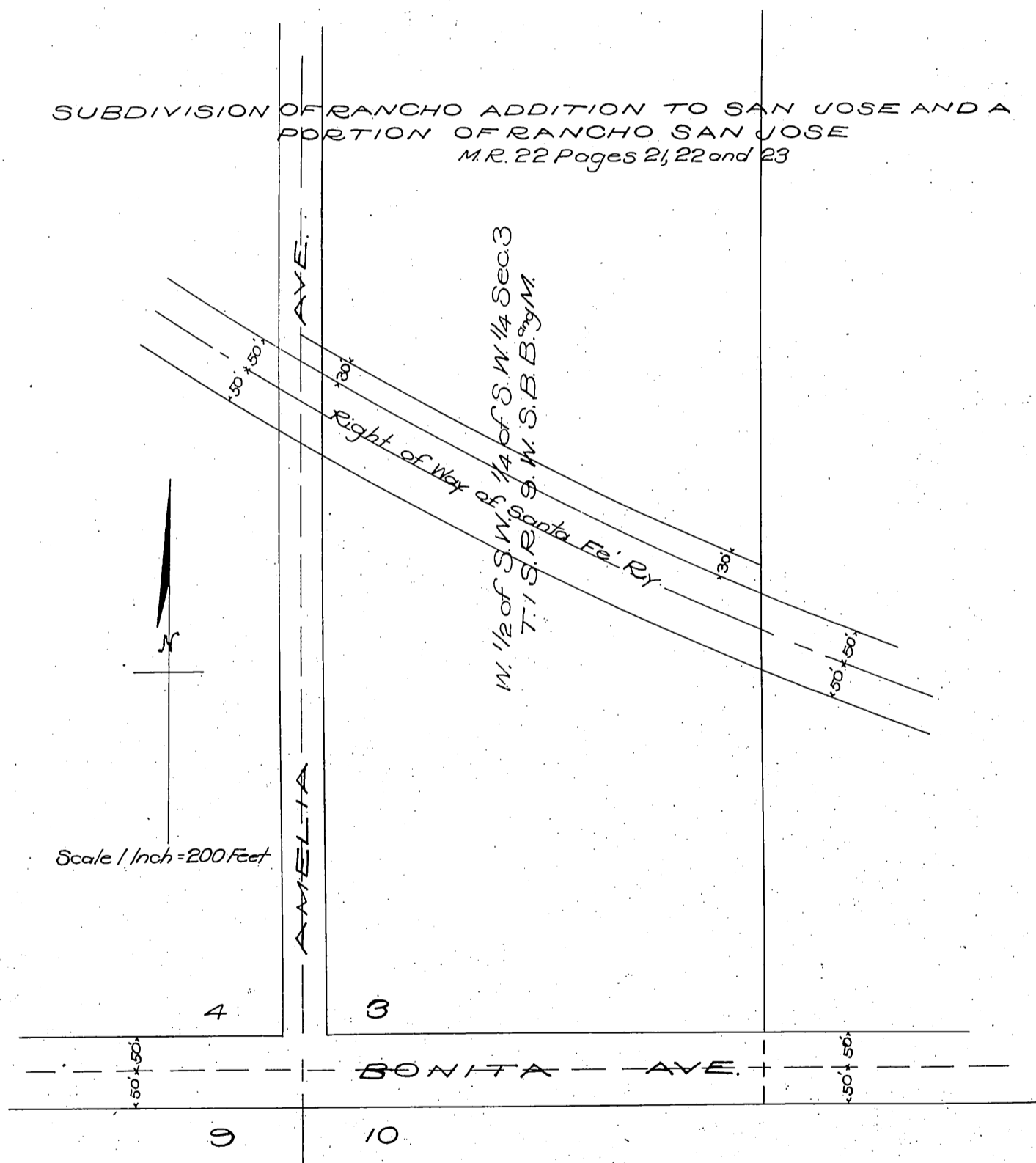


DM 4575-311

70

R.D. List -to-Pacific Electric Land Co.
Iola R. List

SUBDIVISION OF RANCHO ADDITION TO SAN JOSE AND A
PORTION OF RANCHO SAN JOSE
M.R. 22 Pages 21, 22 and 23



Recorded June 13, 1911

5ht 0.2

Comp. H.B.T.

D457