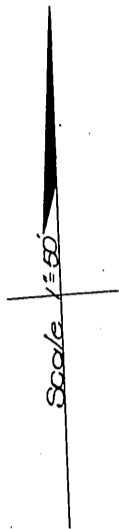


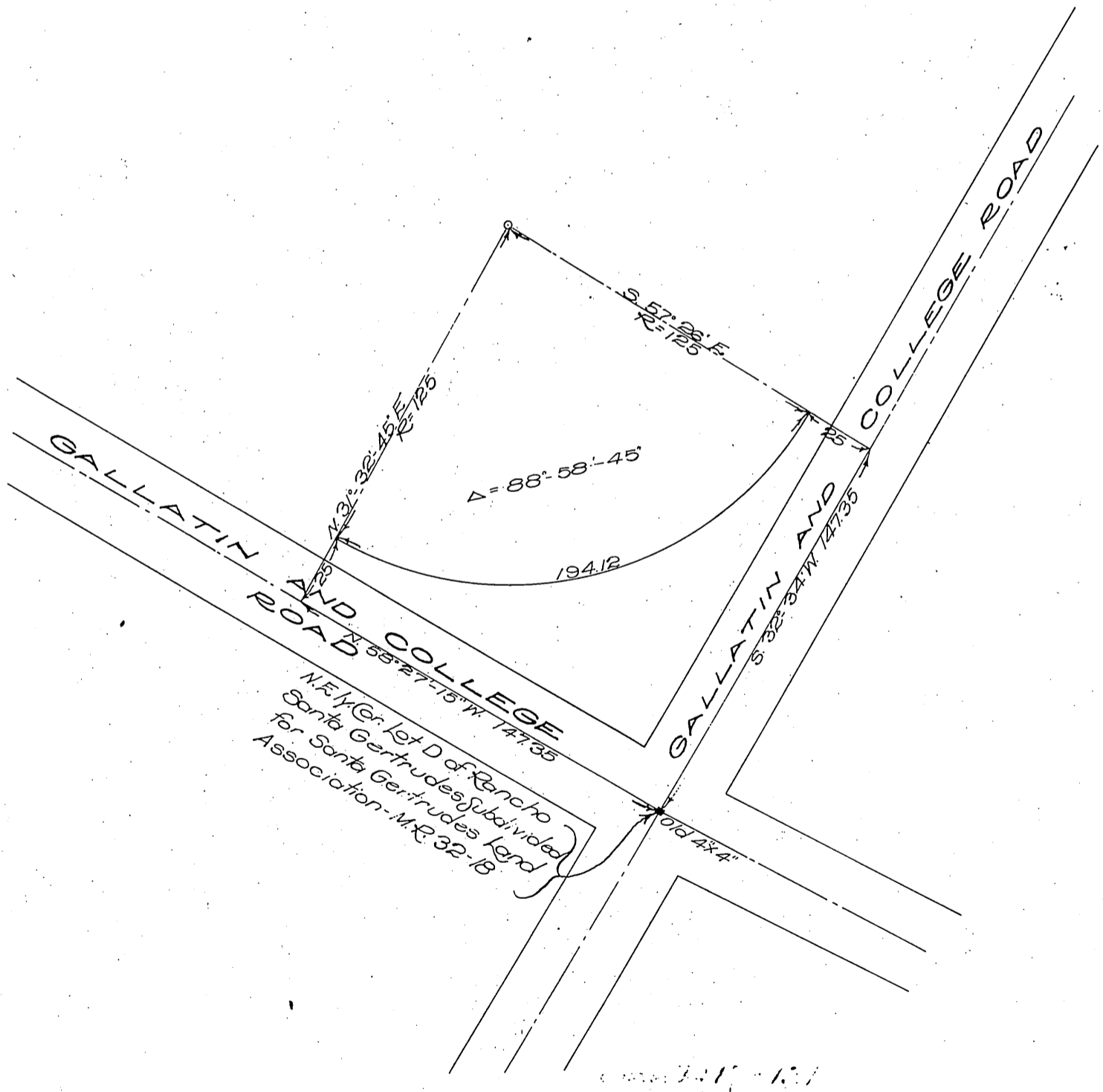
DM 4576-119

71

Emma Ullery - to - County of Los Angeles
J.C. Ullery



RANCHO SANTA GERTRUDES
Finally Confirmed to
JAMES R McFARLAND
AND JOHN G. DOWNEY
Patents, 1-156 et seq.



A119

Recorded May 22 1911

Out in

D4576

comp