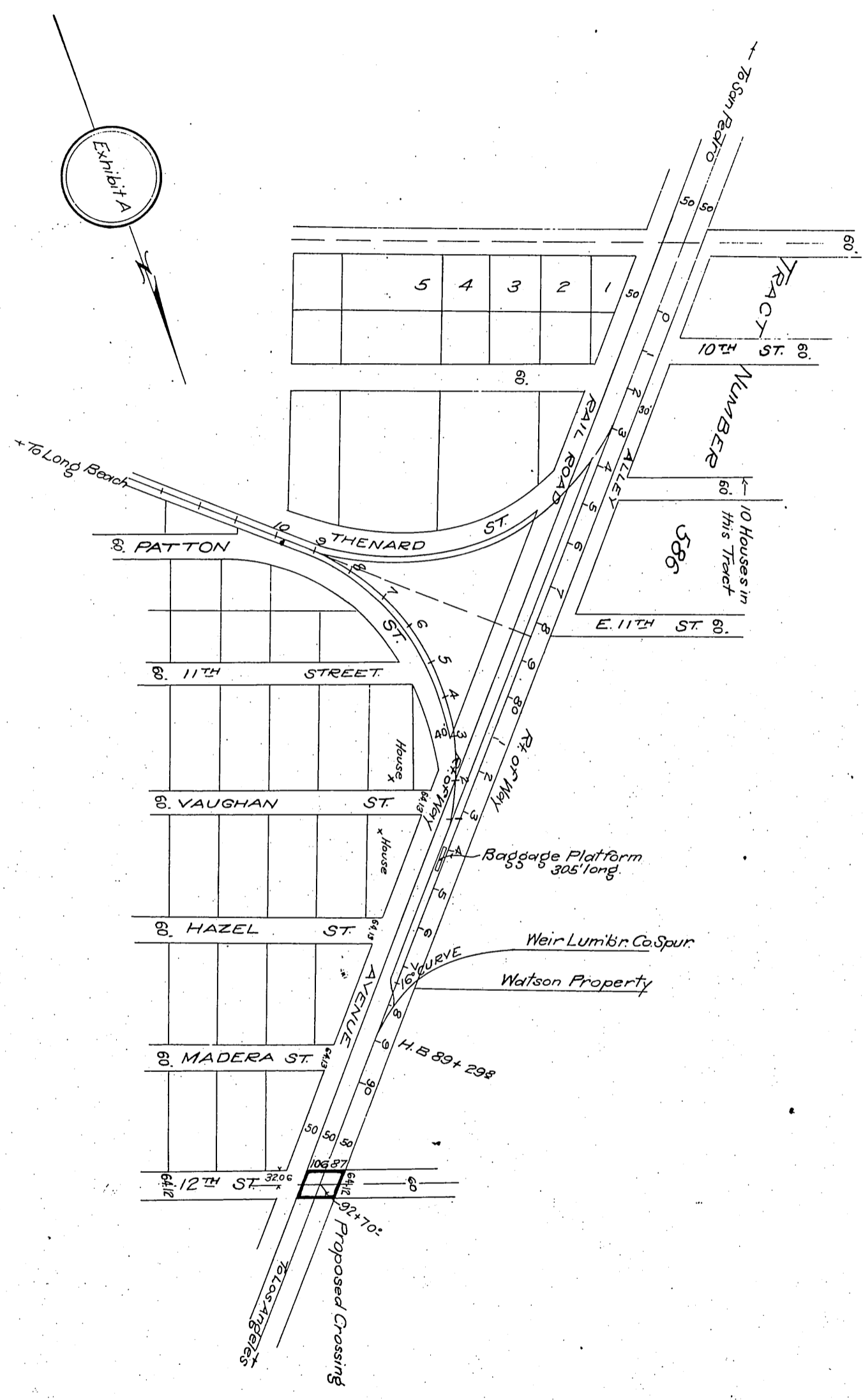


Southern Pacific Railroad Company
and
Southern Pacific Company } to Los Angeles City.



THENARD
 Showing Road Crossing to be Dedicated
 TO
 CITY OF LOS ANGELES
 Los Angeles, Cal., 4-13-1910 A.P.S
 Scale 1"=300'

So. Dist.
M.W.
X-464

Recorded May 17, 1911

COMP. WGT