

DM 4694-147

12

147

1713

2511

7115

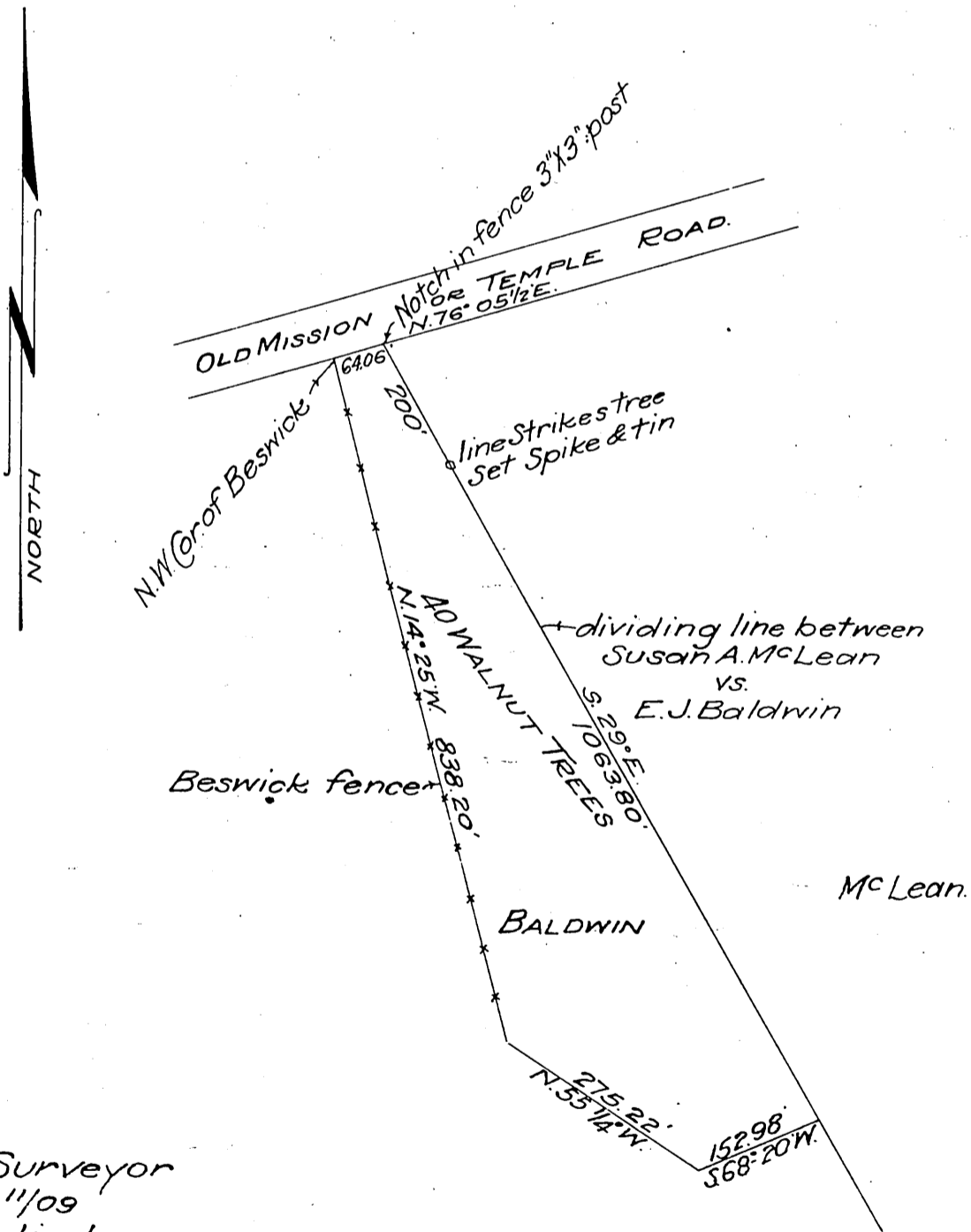
11

Susan A. McLean - Plaintiff

-vs-

Defendants { E.J. Baldwin, John H. Temple  
Richard Garvey, H.A. Unruh  
Executor of last Will & Testament  
of E.J. Baldwin, deceased.

Judgment for Plaintiff.



V.J. Rowan Surveyor  
December 11/09  
Scale 200' = 1 inch

Recorded Sep. 20, 1911

Comp. H.C.T.

A 115 see N 16-297