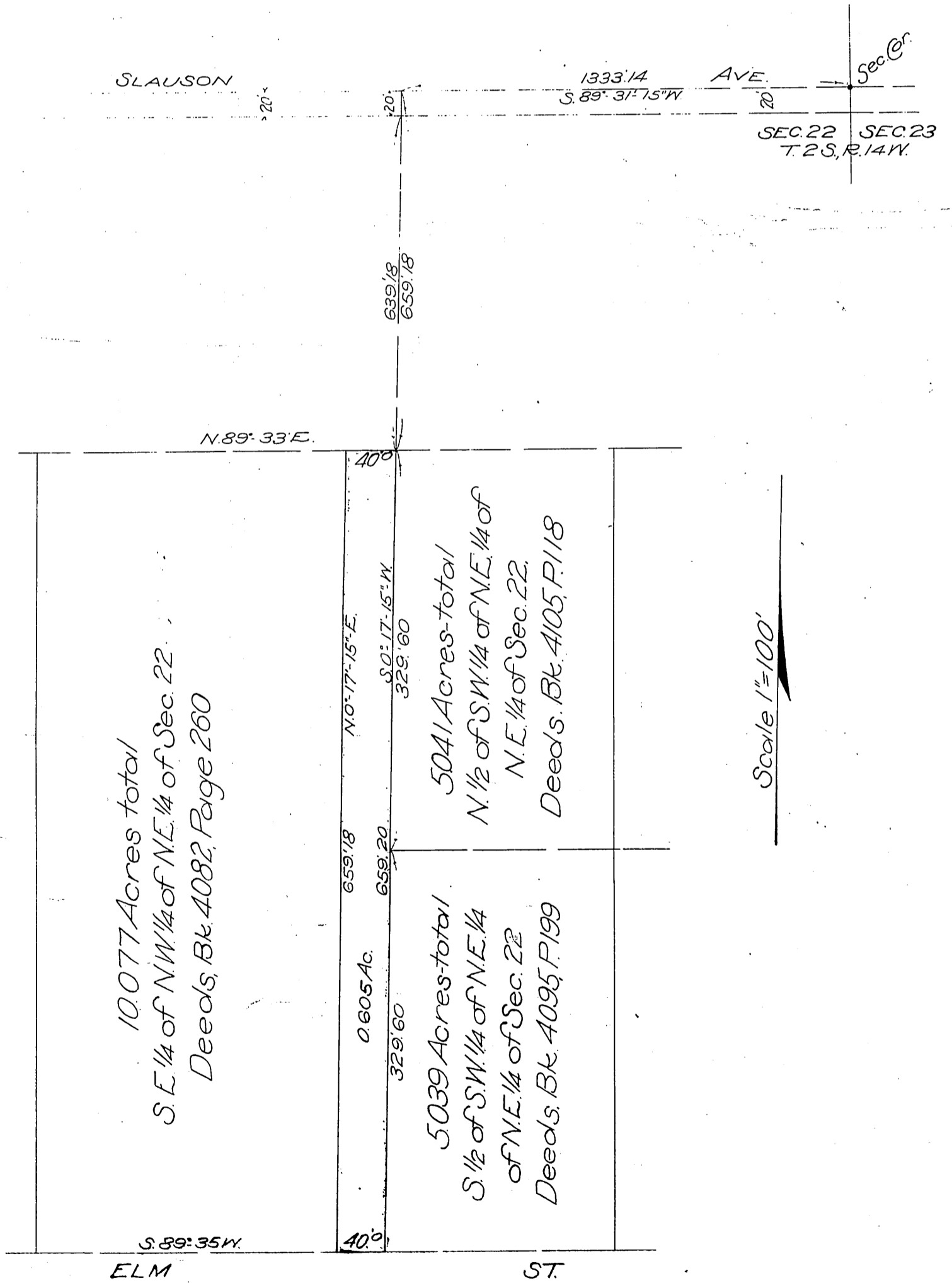


Thos. W. Bulpin  
Ulilia C. Bulpin  
Albert Crutcher  
Kate F. Crutcher  
Edward W. Kuhrtz

to Los Angeles Railway Corporation



10.077 Acres total  
S.E. 1/4 of NW 1/4 of NE 1/4 of Sec. 22  
Deeds, Bk. 4082, Page 260

5.041 Acres total  
N. 1/2 of S.W. 1/4 of NE 1/4 of  
N.E. 1/4 of Sec. 22.  
Deeds, Bk. 4105, P. 118

5.039 Acres total  
S. 1/2 of S.W. 1/4 of NE 1/4  
of NE 1/4 of Sec. 22  
Deeds, Bk. 4095, P. 199

Scale 1"=100'

Recorded Sep. 26 1911.

Comp. H.C.T.

S. 1/2 of N. 1/2 of S. 1/4 of NE 1/4 of Sec. 22

D. 4711