

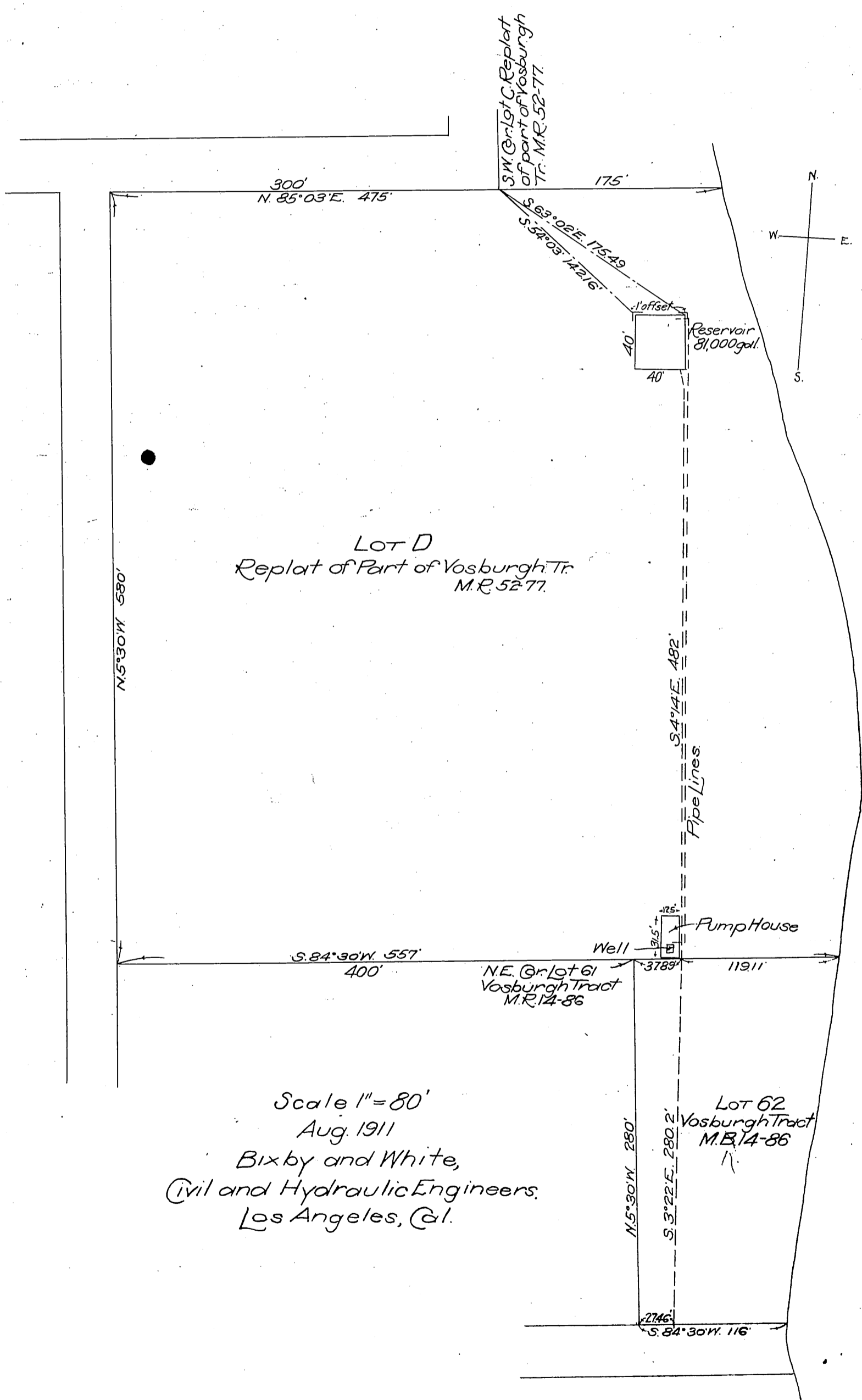
DM 4724-97

34

Agreement between

Frank G. Franciscus, Frances S. Franciscus
and
Frank J. Hart.

97
170 11
46 11
A



LOT D
Replat of Part of Vosburgh Tr.
M.R. 52-77.

N. 5° 30' W. 580'

300'
N. 85° 03' E. 475'

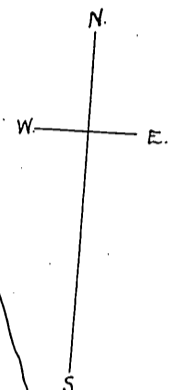
175'

SW. Gr. Lot C. Replat
of part of Vosburgh
Tr. M.R. 52-77

S. 63° 02' E. 175.49
S. 52° 03' 1/2' E. 142.16'

40'
40'

Reservoir
81,000 gal.



Scale 1" = 80'
Aug. 1911
Bixby and White,
Civil and Hydraulic Engineers,
Los Angeles, Cal.

S. 84° 30' W. 557'
400'

NE. Gr. Lot 61
Vosburgh Tract
M.R. 14-86

Pump House

Well

125'
7.5'

3789'

119.11'

Lot 62
Vosburgh Tract
M.B. 14-86

N. 5° 30' W. 280'

S. 3° 22' E. 280.2'

2746'

S. 84° 30' W. 116'