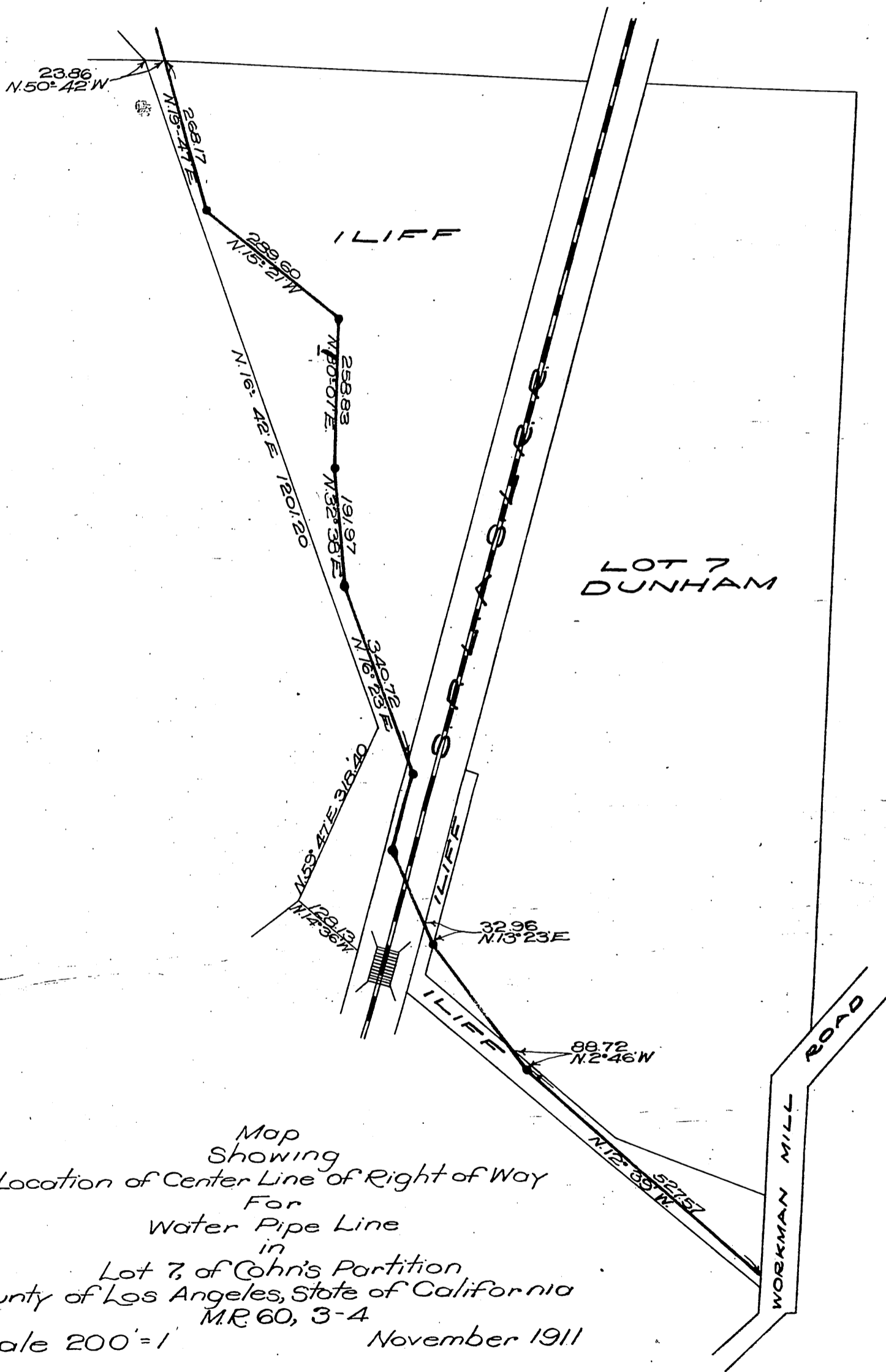


M. J. Iliff -to- The East Whittier Land and Water Co.  
W. O. Dunham

A



Map  
 Showing  
 Location of Center Line of Right of Way  
 For  
 Water Pipe Line  
 in  
 Lot 7, of Cohn's Partition  
 County of Los Angeles, State of California  
 M.R. 60, 3-4  
 Scale 200' = 1  
 November 1911