

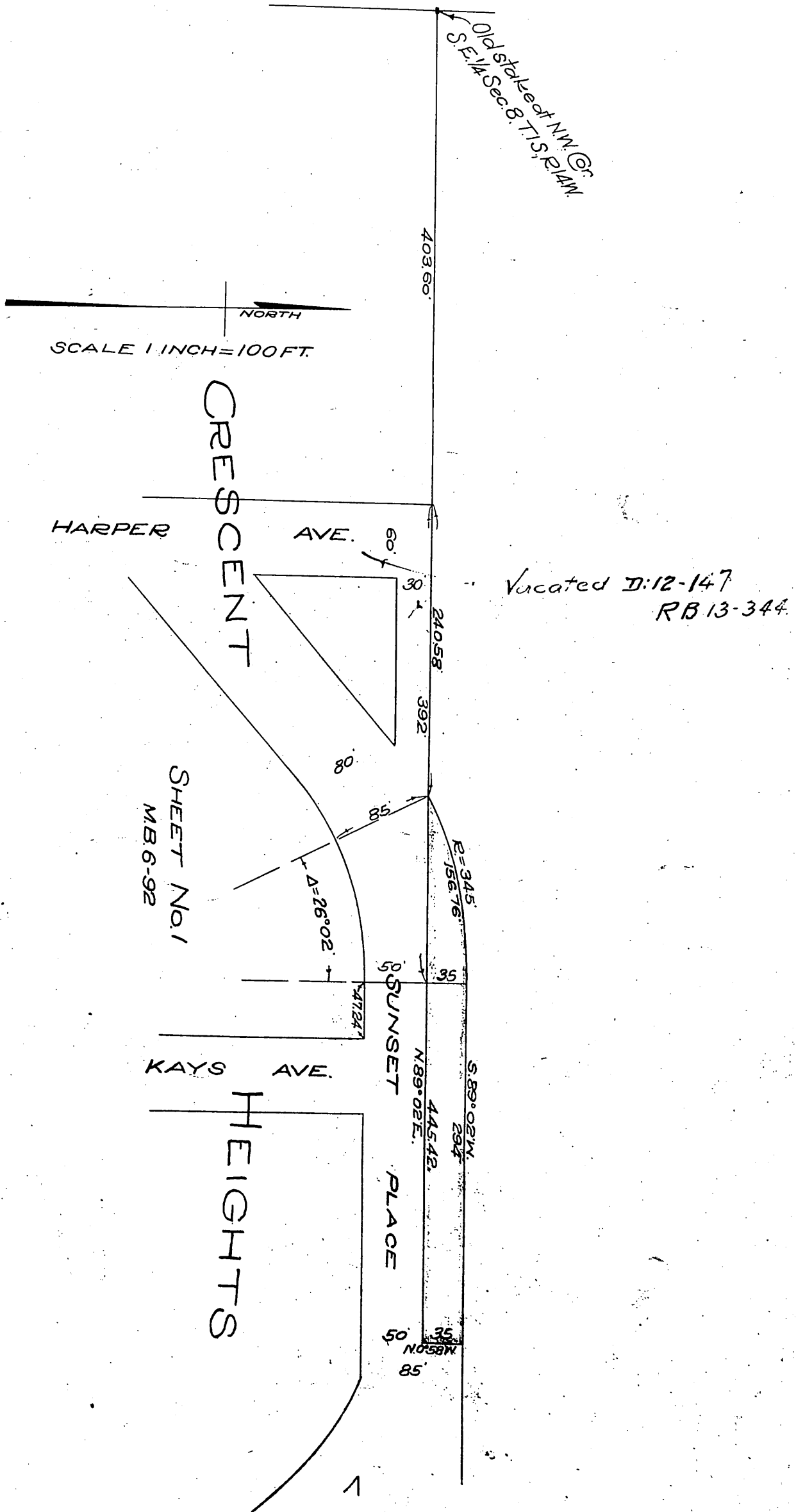
DM 4858-159

159

85

Gus D. Harper
Hannah B. Harper
Effie P. Harper
Benjamin W. Harper } to County of Los Angeles.

11-22
A 15



OWNERS:-
CHAS. F. HARPER
BENJ. W. HARPER

See D: 17-206

Recorded Feb 29, 1912

511 22