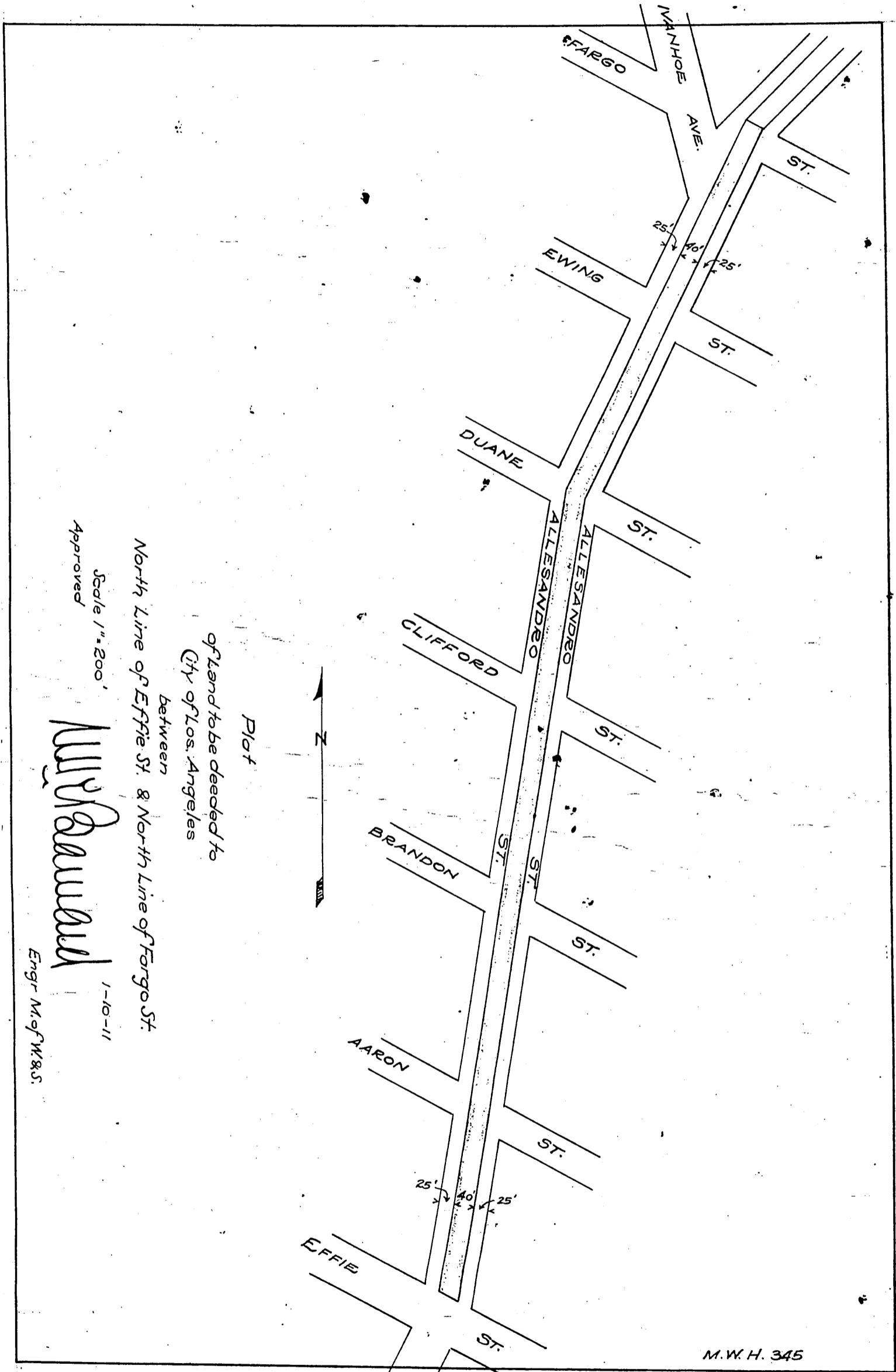


DM 4863-164

164

86

Pacific Electric Railway Company
to
City of Los Angeles



Scale 1" = 200'

North Line of Effie St. & North Line of Fargo St.

Plot of land to be deeded to
City of Los Angeles

Plot

M. W. H. 345

1-10-11

Engr. M. of W. & S.

M. W. H. 345

Alessandro St. changed to Glendale Blvd. Ord. 41,130

See D:16-153

Recorded Feb. 16, 1912.