

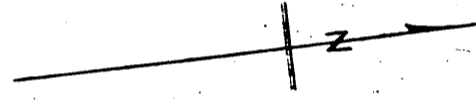
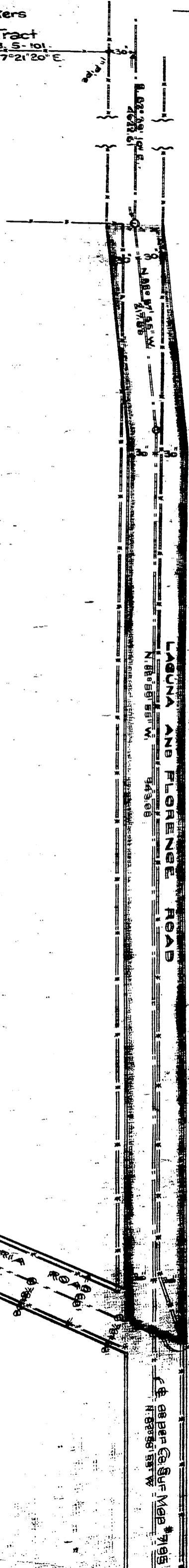
DM 4883-54

54

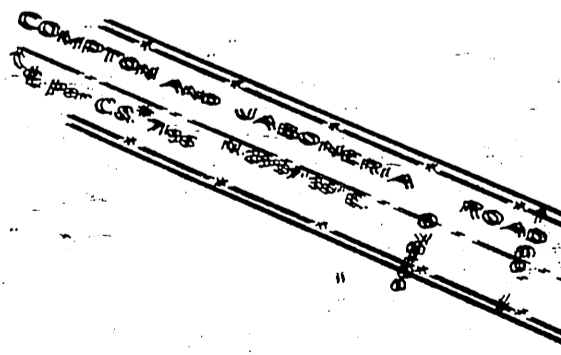
Lot 1 - Block 3  
L.A. Walkers  
Berry & Alfalfa Tract  
M.B. S-101  
N. 7° 21' 20" E.

5

Arcadia B. de Baker  
William Specht  
Bertha Specht  
to  
County of Los Angeles.



Scale 1" = 100'



2" Pipe Sta. 79 + 39.28 from S.W. Co. Sur. Map # 7195

See S.W. Co. Sur. Map # 7195

See D:17-198

NO 2 B 241

Recorded Feb. 2-1912