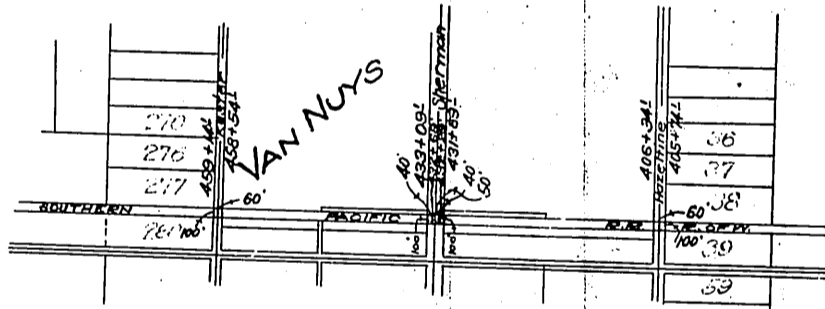


146

140
S77
192
A-129
80

Southern Pacific Railroad ©
Southern Pacific ©
-ton
County of Los Angeles

277



Recorders Note: - Red figures are in pencil on Original.

Opening Kester Ave. across S.P. R/W - C.F. 1757.
Opening Van Nuys Blvd. & Hazeltine Ave. across S.P. R/W - C.F. 1783.

See 17-206
sh. 55

Recorded Mar. 25, 1912

4951

A-129B

CAMP HOT

D. 4951