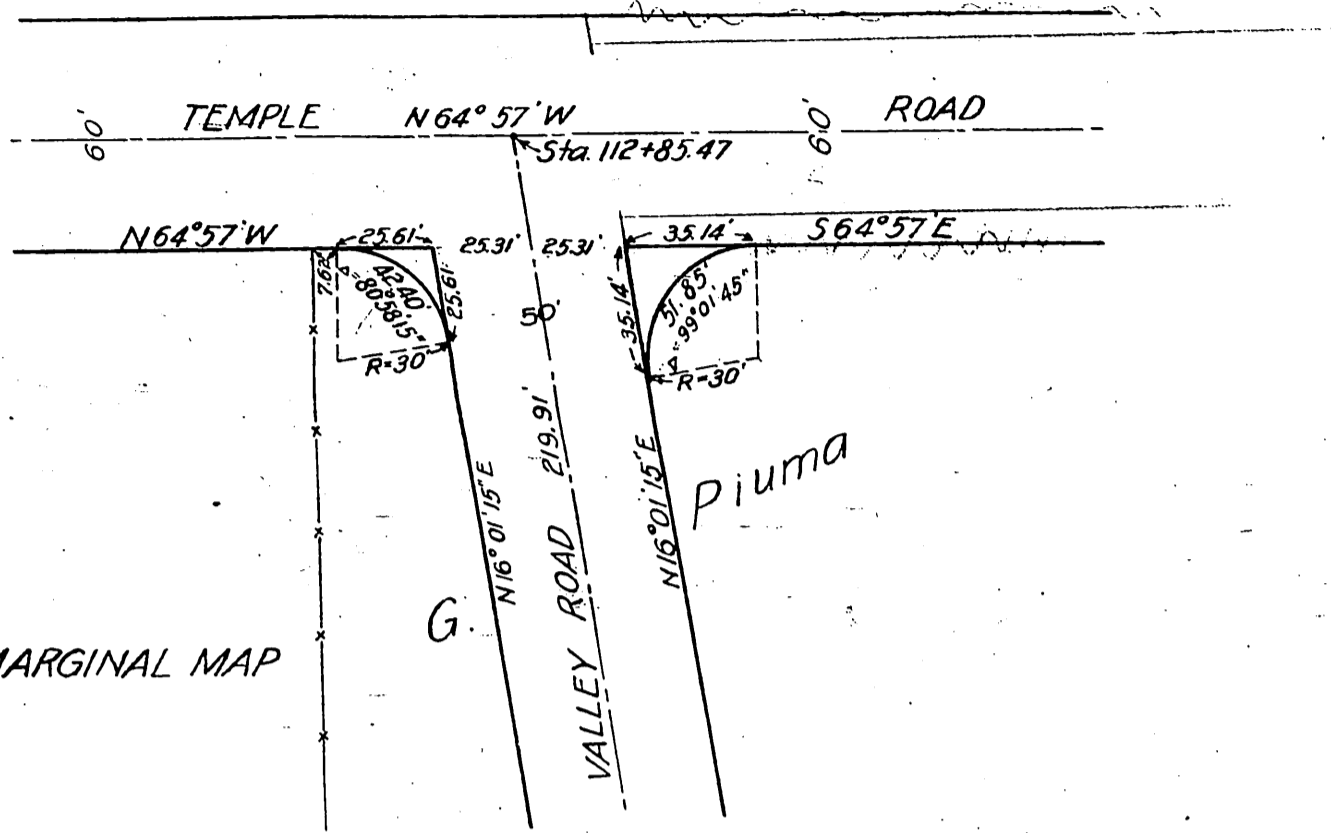


41



Vac. por. San Gabriel Blvd. (Valley Rd.) ~ E: 8-76, O.R. 15540-27  
 Por. San Gabriel Blvd. changed to Rosemead Blvd. ~ D: 49-273, Min Bk. 227-166  
 Valley Road changed to San Gabriel Blvd. D: 49-23 R.B. 35-306

LOS ANGELES COUNTY HIGHWAY COMMISSION

Right of Way Map of

VALLEY ROAD

From South line of Rancho La Merced to  
 San Gabriel Boulevard

Scale 1 inch = 300 Ft.

Nov. 14, 1911

Recorder's Filed Map No 290.

EXHIBIT "A"