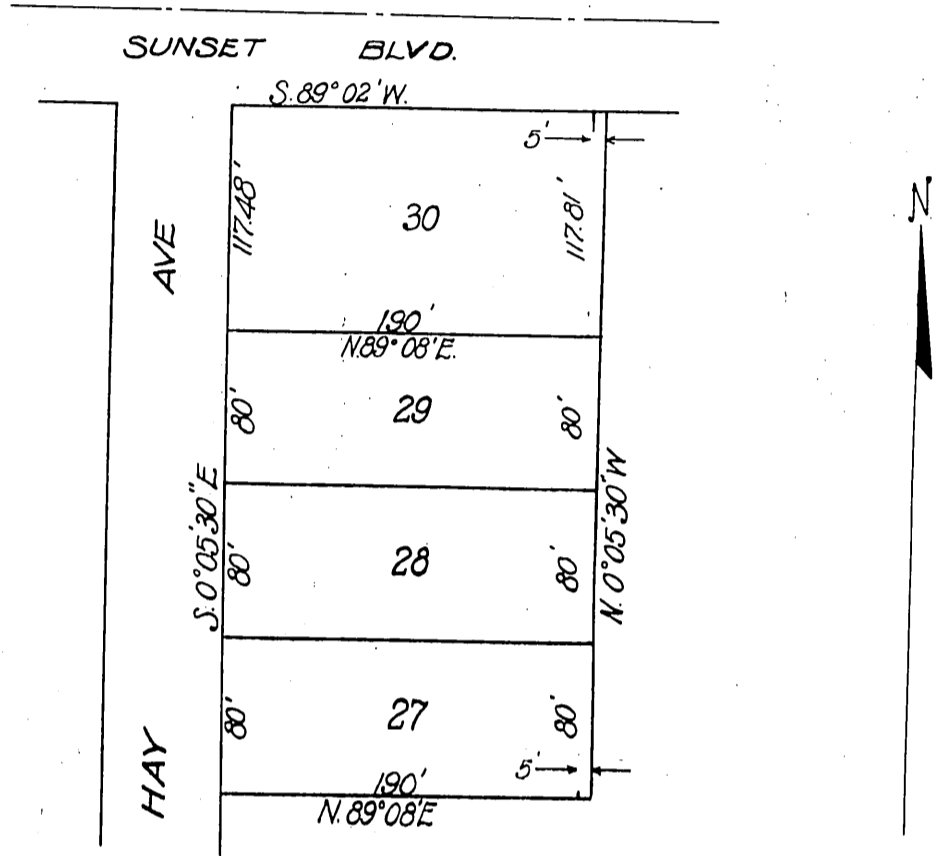


Wm H. Hay  
~ to ~  
Pacific Light and Power Corporation



Location of  
**DISTRIBUTION POLE LINE ACROSS**  
Wm H. Hay's Property  
Lots 27, 28, 29, & 30 of Subdivision of  
SE 1/4 of Sec. 8, T. 1 S. R. 14 W. S. 8 M.  
(Block A Crescent Heights)

**PACIFIC LIGHT and POWER CORP.**  
Los Angeles, California

By \_\_\_\_\_ Traced by F.V.  
Checked HCA Scale 1"=100'  
App. CEH Date Dec. 15, 14.

Recorded Mar 15, 1915

8000 1/2