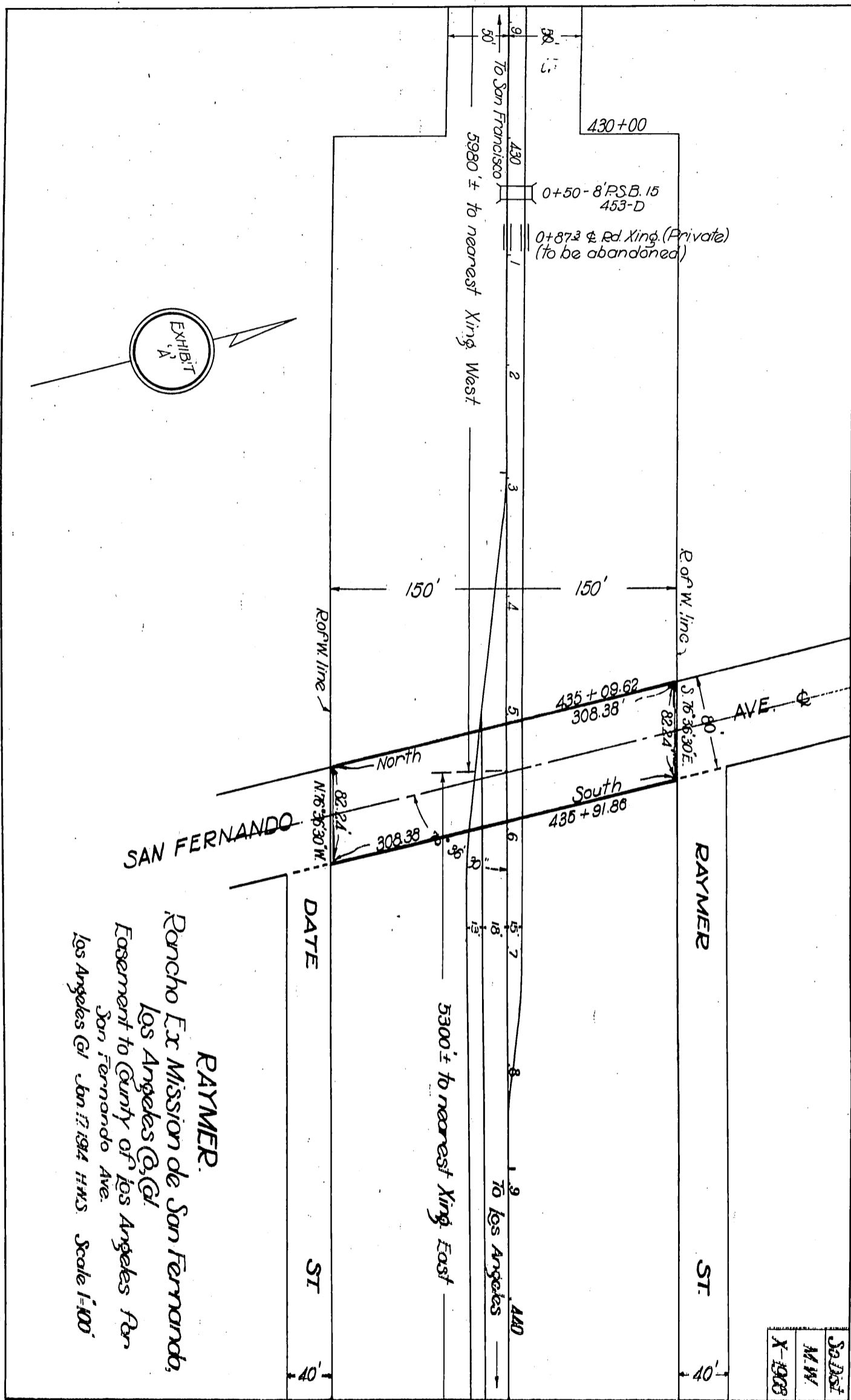


Southern Pacific Railroad Company
and
County of Los Angeles



RAYMER.
 Rancho Ex Mission de San Fernando,
 Los Angeles Co., Cal.
 Easement to County of Los Angeles for
 San Fernando Ave.
 Los Angeles Cal. Jan 17, 1914 HHS Scale 1"=100'

D:19-166
 A-233
 Recorded Apr 5, 1915

11755