

Samuel Mayne }
Jean Mayne } - to - Pacific Electric Land Company

3812

A 959

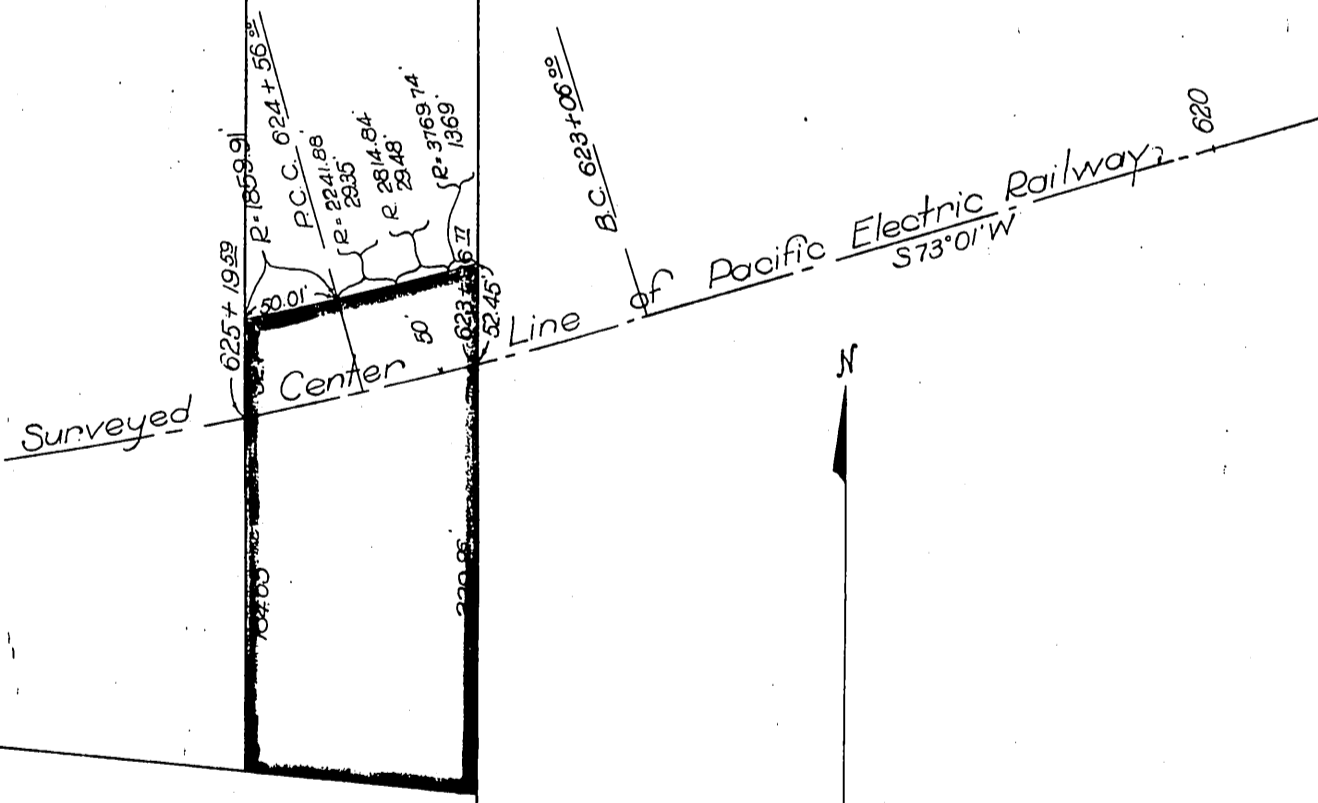
R. W. POINDEXTER'S SUBDIVISION

OF A PORTION OF SEC. 12, T. 3 S. R. 14 W.
Misc. Rec. Book 59 page 82 Records of Los Angeles County
4 7/8 Ac.

LOT 3

LOT 4

3° Curve
Taper No 1
Δ 2' 15"
West 5²⁸ Acres
of LOT 4
East 4^{7/8} Acres
of LOT 3



Scale 1"=100'

Recorded July 8, 1915.

A-358

S.M. O.R.
see 1131-113