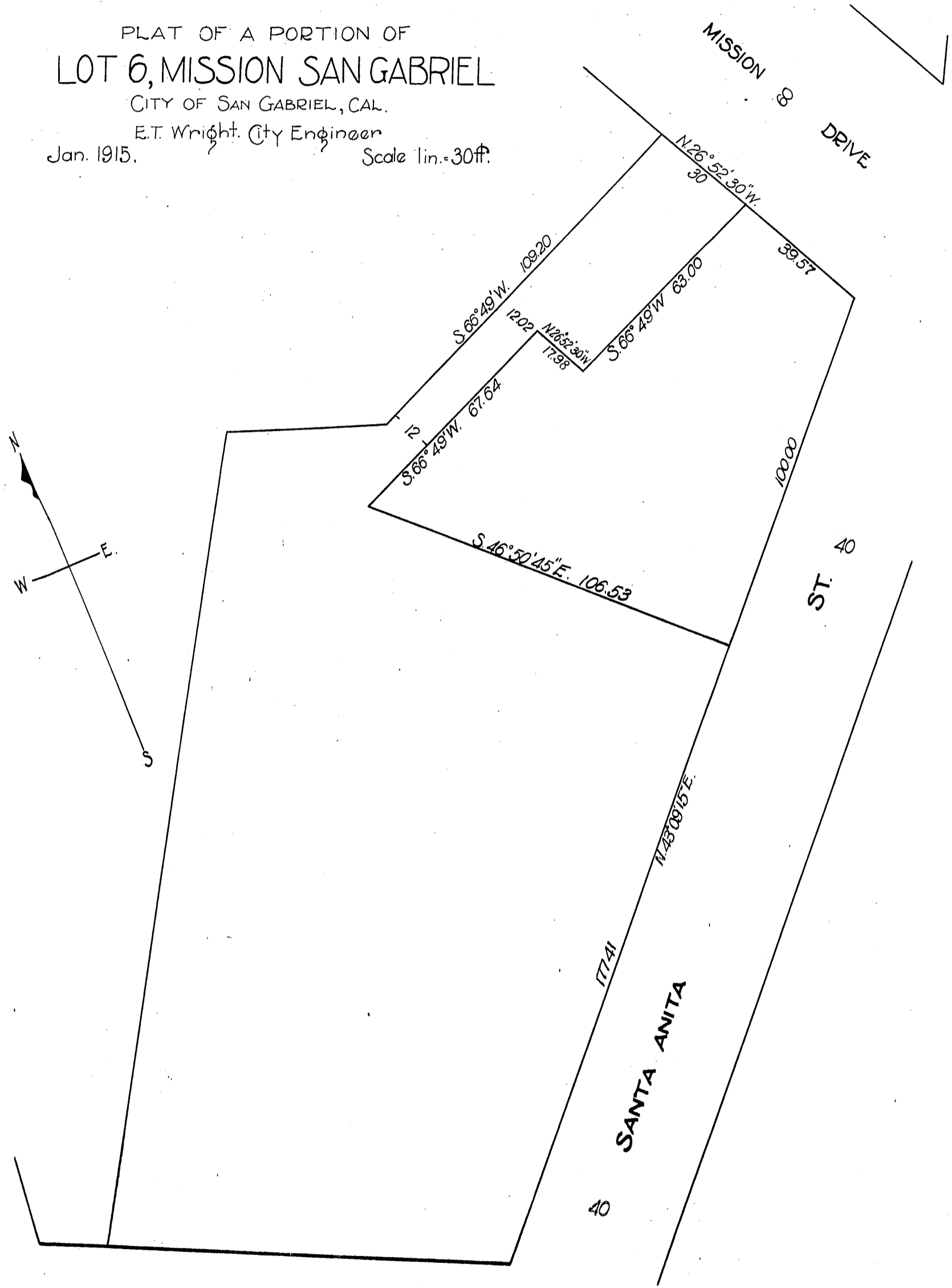


J. J. Higuera
To
Bank of San Gabriel

58

3/17/15

PLAT OF A PORTION OF
LOT 6, MISSION SAN GABRIEL
CITY OF SAN GABRIEL, CAL.
E.T. Wright, City Engineer
Jan. 1915. Scale 1 in. = 30 ft.



A-251

Recorded Apr 23, 1915

E.T. Wright

Shit. 44