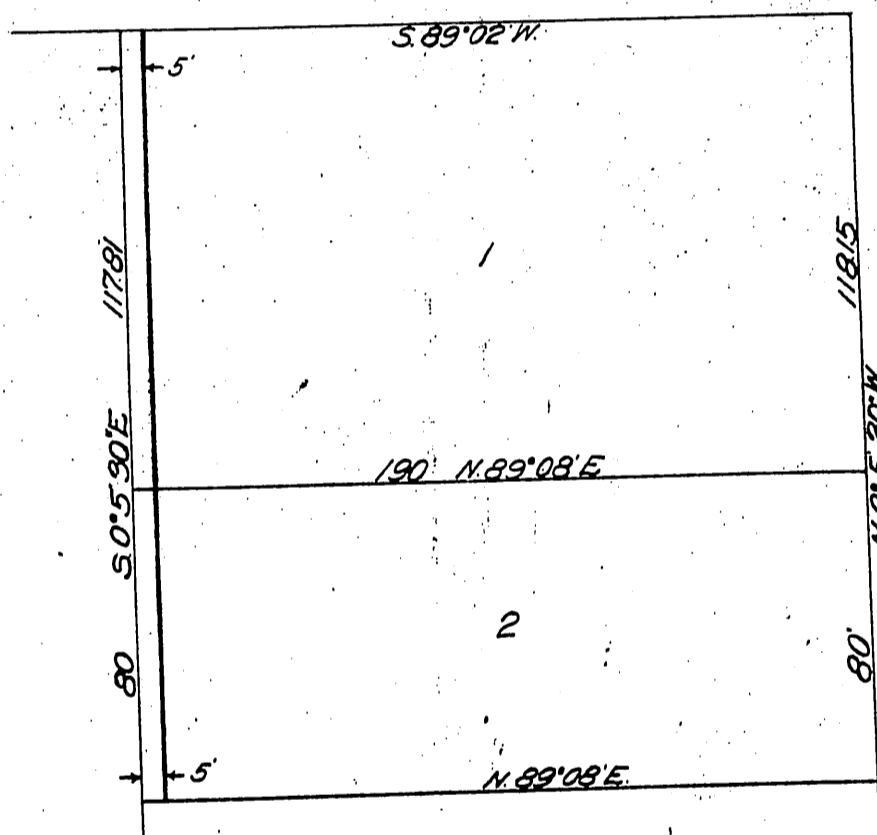


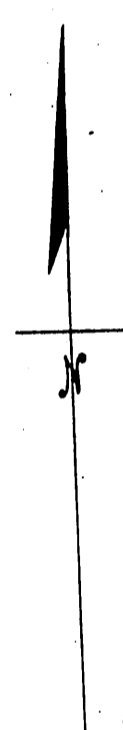
E. Bilharz  
~to~  
Pacific Light and Power Corp.

Sunset Blvd.



Ave.

Fairfax



Location of  
Distribution Pole Line Across  
E. Bilharz's Property  
Lots 1 & 2 of Subdivision of  
S.E. 1/4 of Sec. 8 T. 1 S. R. 14 W. S. B.M.  
(Block A Crescent Heights)  
Pacific Light and Power Corp.  
Los Angeles, California.

By \_\_\_\_\_ Traced by F.V.  
Checked HGA Scale 1" = 50'  
App. G.E.H. Date Dec. 15, 14

1013-B-298

Recorded Mar 18 1915