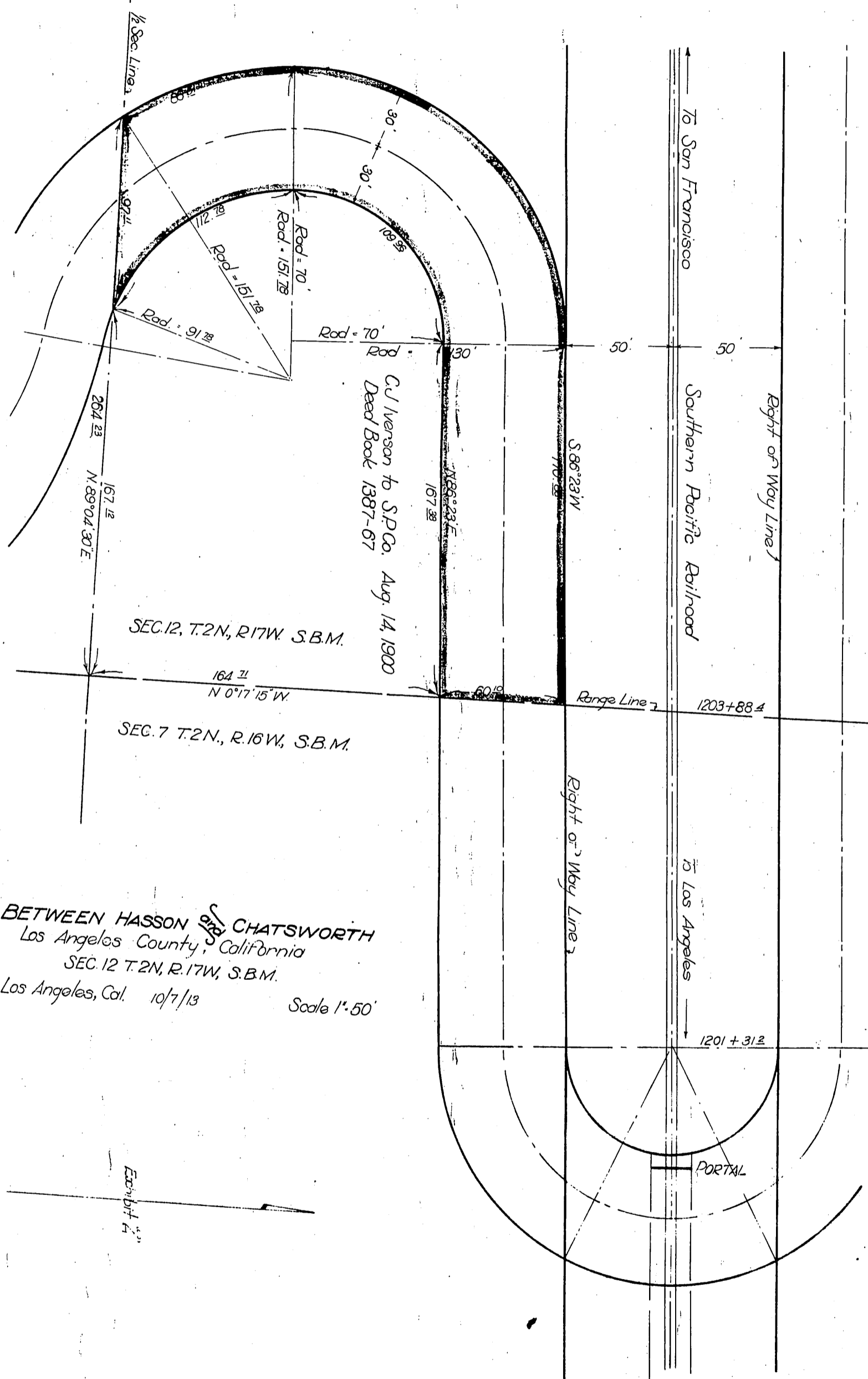


Southern Pacific Company
to
County of Los Angeles

22-17
1317
A-175



BETWEEN HASSON ^{9/26} CHATSWORTH
Los Angeles County, California
SEC. 12 T. 2N., R. 17W., S.B.M.
Los Angeles, Cal. 10/7/13 Scale 1"=50'

C.S. 7836 Sht. 4.
D: 24-57

Recorded Oct. 4, 1915

A-175