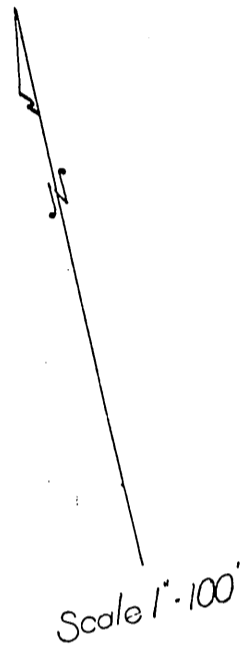
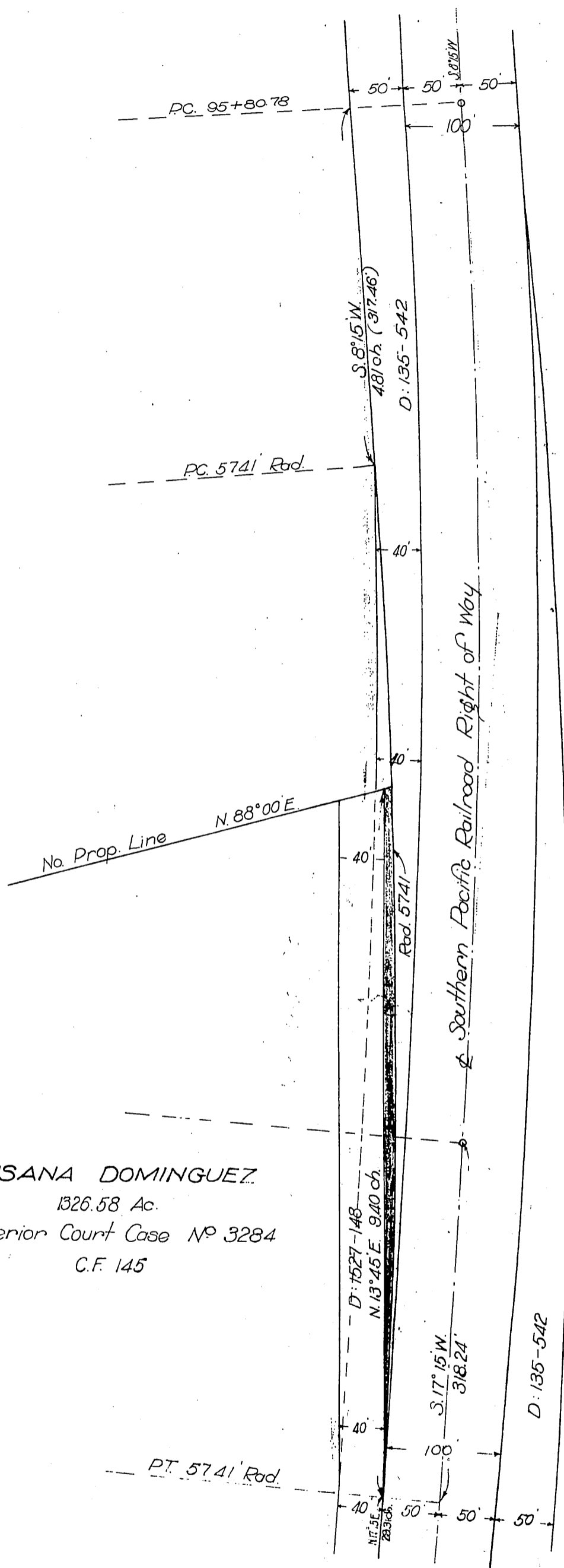


Susana del Armo } to ~ The County of Los Angeles
Gregorio del Armo }

11-13
9-15



SUSANA DOMINGUEZ
1326.58 Ac.
Superior Court Case No 3284
C.F. 145

Portion colored red to be decided

D: 24-43

Recorded Sept. 20, 1915.

A-105A

11-20-30