

DM 6110-192
84

192
3514
49519

John Schreiner
Elisabetha Schreiner
Frank Schreiner
William Schreiner
Emma Wilhelm
Minnie Pillard
Eugene Schreiner
Katie Poasch
Frances Shelly
Amelia Marsh
Louisa Kings

to - Pacific Electric Railway Co.

R. W. POINDEXTER'S SUBDIVISION
of a portion of Sec. 12, T. 3 S. R. 14 W.
Misc. Rec. Book 59, Page 82 Los Angeles County Records

LOT 2

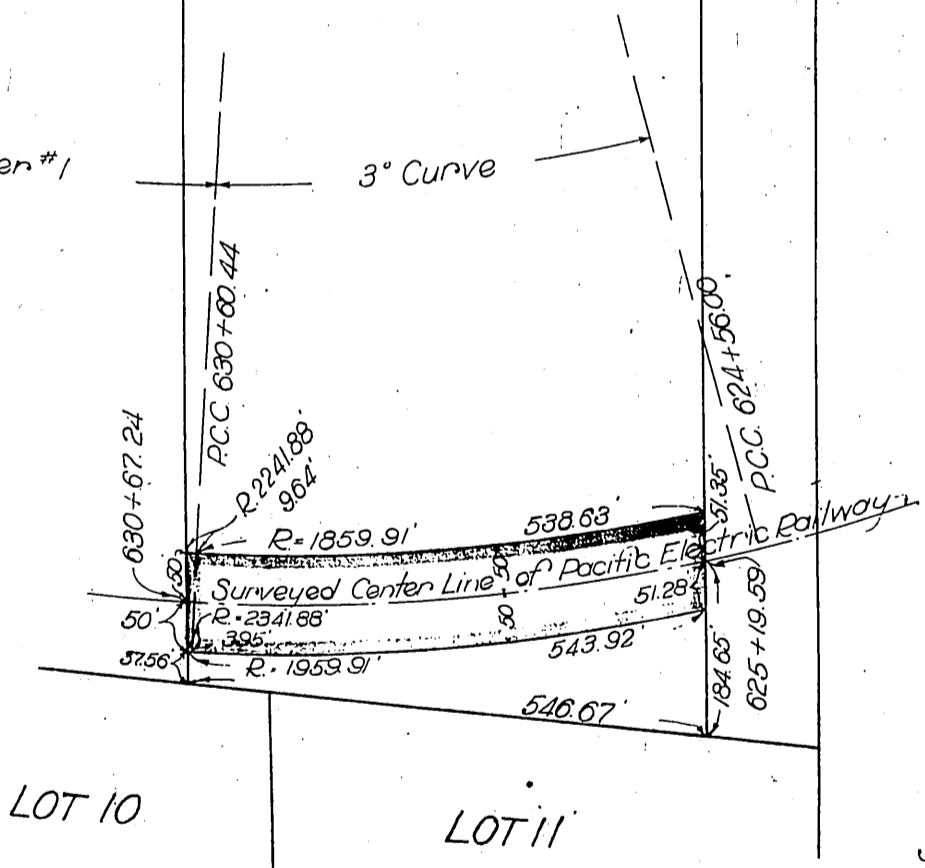
LOT 3

LOT 4

West 21⁵⁴ Acres of Lot 3

Taper #1

3° Curve



Scale 1"=200'

Recorded Sept. 18, 1915

A-95B

Shit. O.N.

See M 37-244