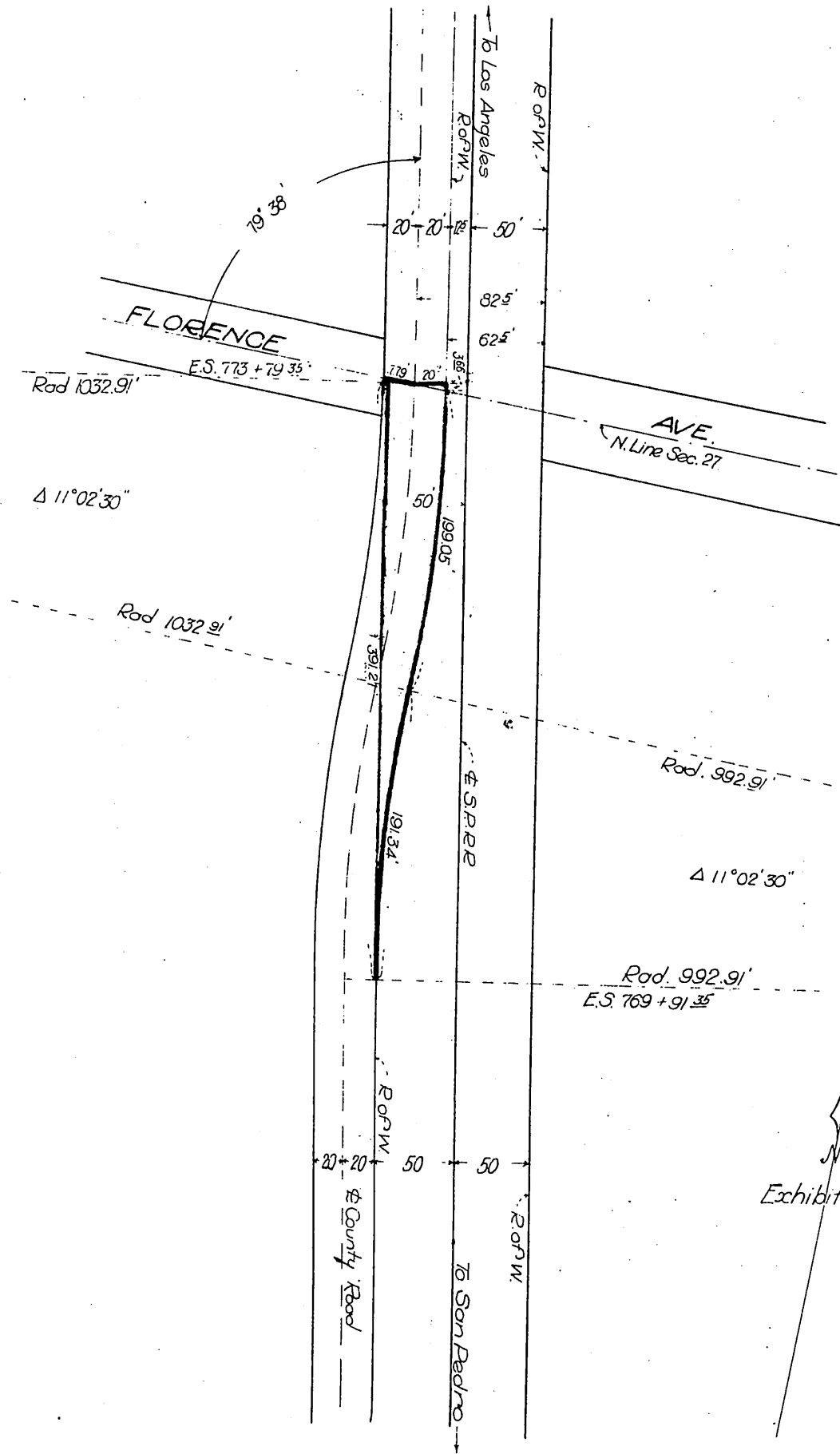


Southern Pacific Railroad Co. }  
Southern Pacific Co. } -to- County of Los Angeles



For Alameda St. widening see H:48-3-4.

FLORENCE  
E 1/2 N.W. 1/4 SEC. 27 T. 2S. - R. 13W. Los Angeles Co. Cal.  
Prop. Road Easement to L.A. County  
Scale 1"=100' JWP Feb 23, 1915  
CL EMP

D:24-46 A-141B

Sheet 7