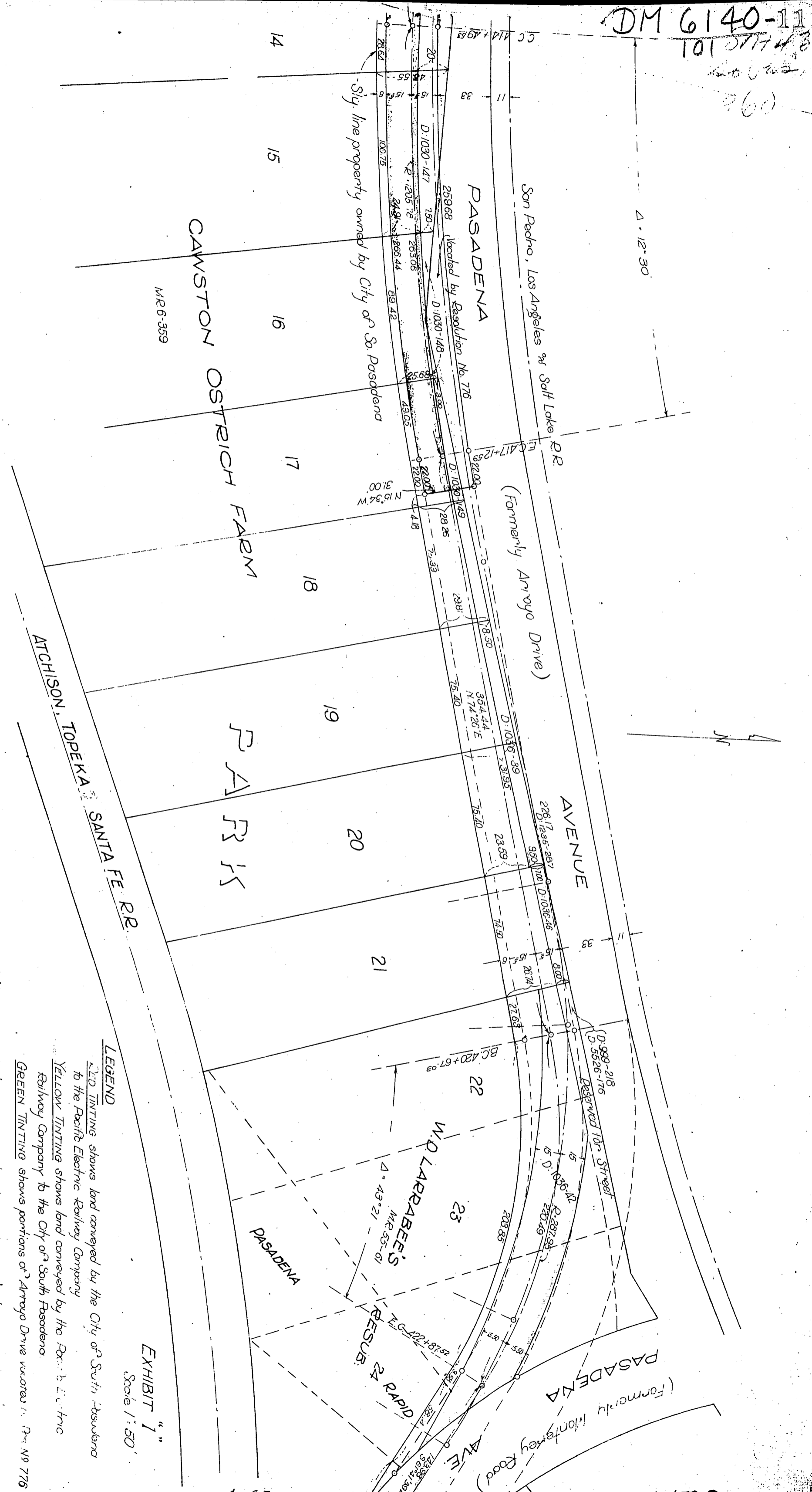


DM 6140-11
 101 5114 8
 260



LEGEND

RED TINTING shows land conveyed by the City of South Pasadena to the Pacific Electric Railway Company
 YELLOW TINTING shows land conveyed by the Pacific Electric Railway Company to the City of South Pasadena
 GREEN TINTING shows portions of Arroyo Drive vacated by Resolution No. 776

EXHIBIT "1"
 Scale 1" = 50'

60-A

Sht. 8 D. 6140-11