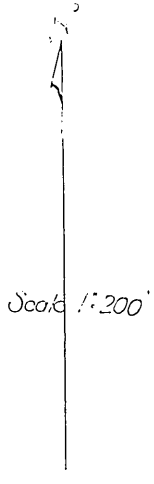


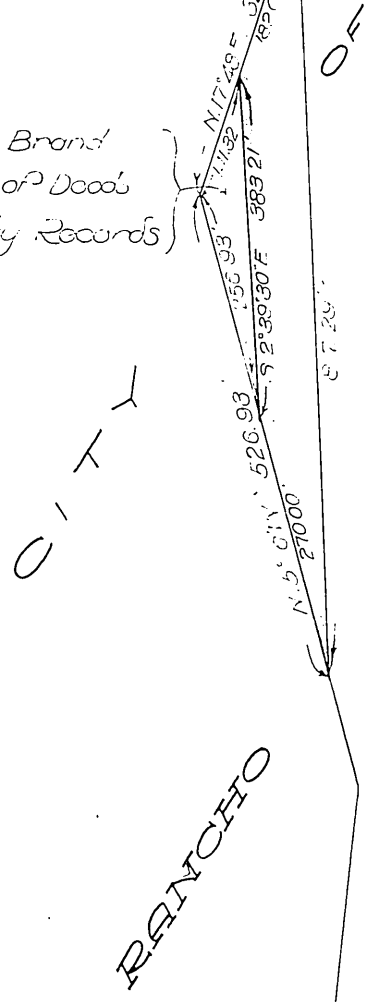
Patron Hunter
-to-
Pacific Electric Railway Company



LOS ANGELES
FELIZ
CAL.

Allotted to Asa Hunter by
Partition Case No 29598
of the Superior Court of
Los Angeles County, California

Asa Hunter to L.C. Brand
Book 1814, Page 96, of Deeds
Los Angeles County Records



LOS ANGELES COUNTY

RANCHO

Recorded Dec. 14, 1915

H...