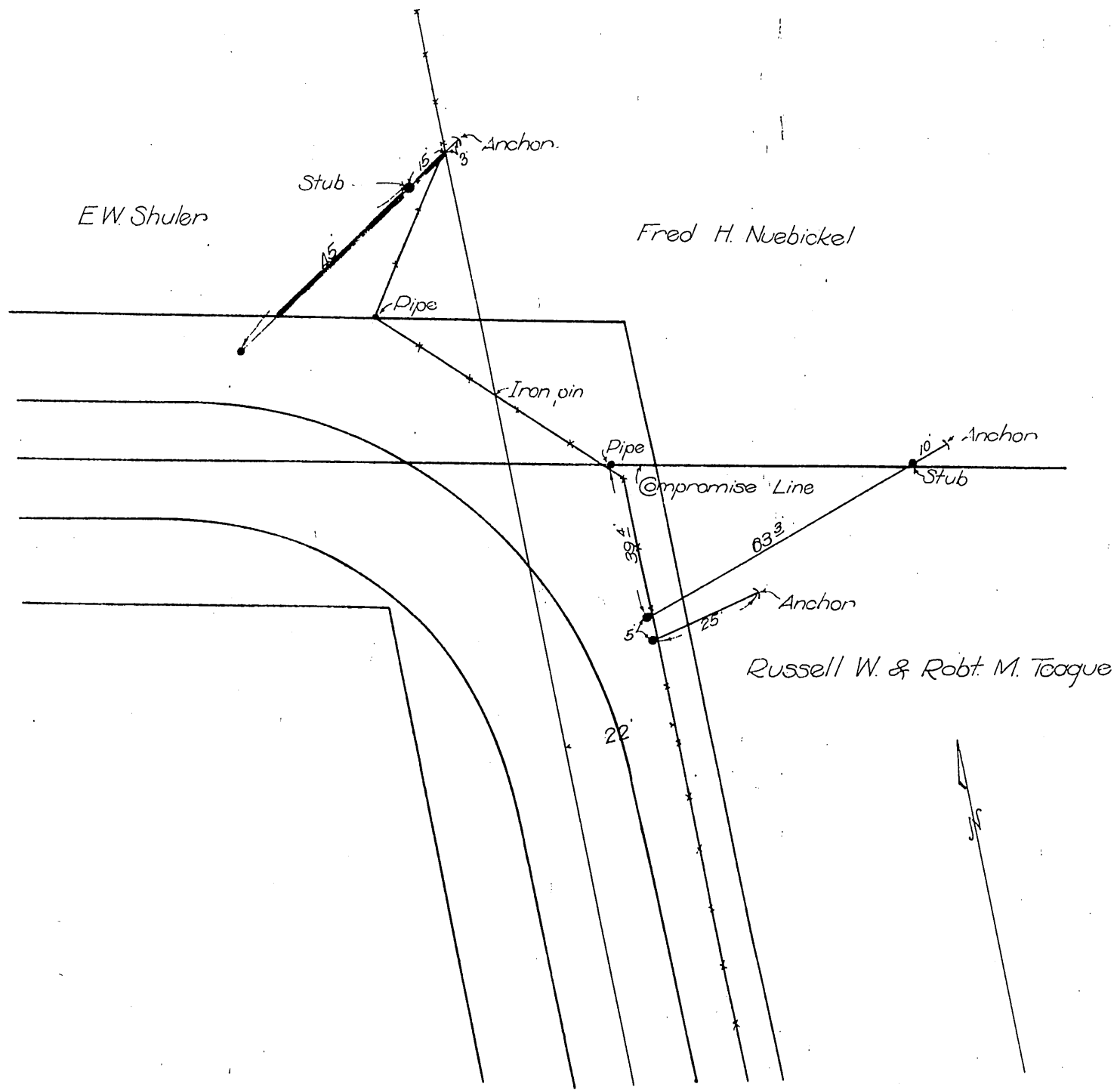


E.W. Shuler
to
Pacific Light and Power Corporation



Location of Stubs & Anchors
for 15 K.V. line along Foothill Boulevard
at SAN DIMAS AVENUE
in S.E. 1/4 Sec 34 T1N., R9W S.B.M.
Los Angeles County, California

PACIFIC LIGHT and POWER CORP.	
LOS ANGELES, CALIFORNIA	
Drawn by _____	Traced by _____
Checked _____	Scale 1"=30'
App. _____	Date _____
19-1	

Recorded Mar 21, 1916