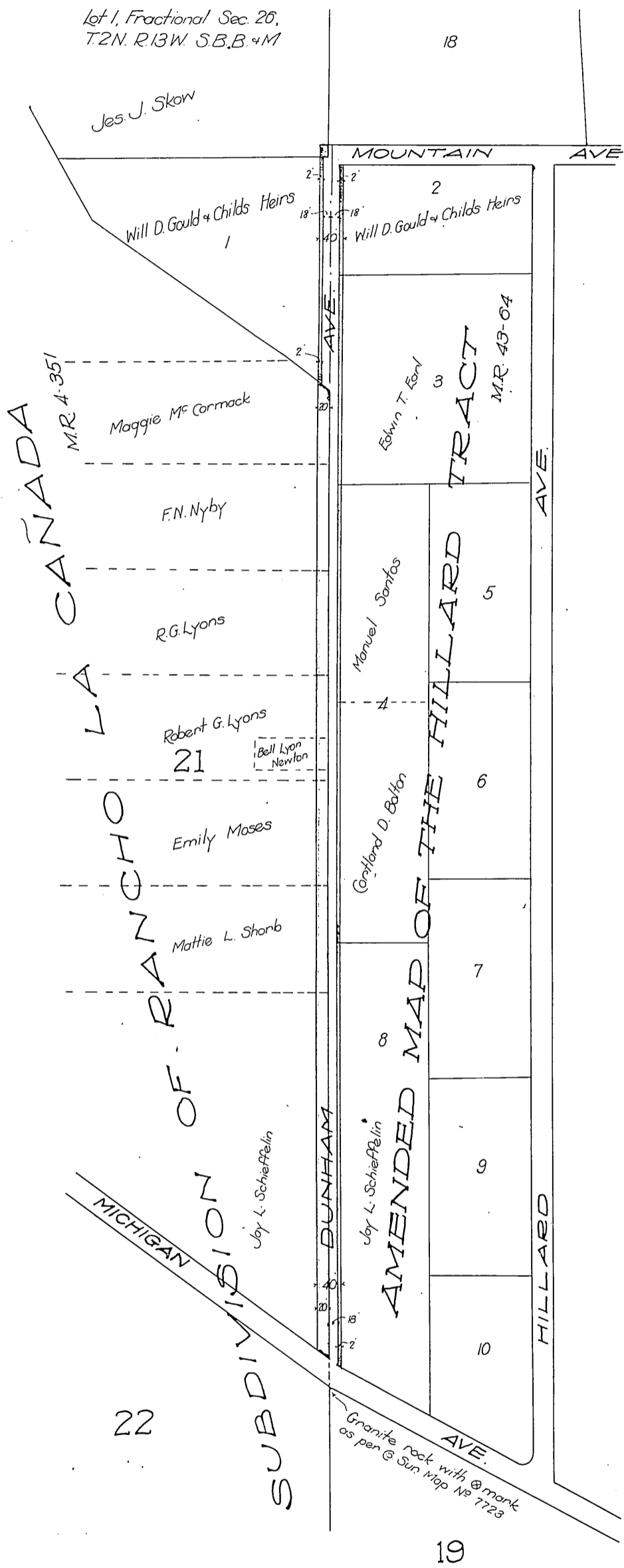


O. B. Carter  
 E. T. Earl  
 Mrs. Maggie McCormack  
 Ib. H. Nyby  
 Manuel Santos  
 R. G. Lyons

Belle Lyons Newton  
 Emily Moses  
 Joy L. Schieffelin  
 Courtland D. Bolton  
 Mrs. Mattie L. Shorb

to County of Los Angeles



Note.- @ored portion to be deeded

Dunham Ave. changed to Palm Drive D:13-98

See D:19-211  
 Recorded Feb. 8, 1916

A-70A