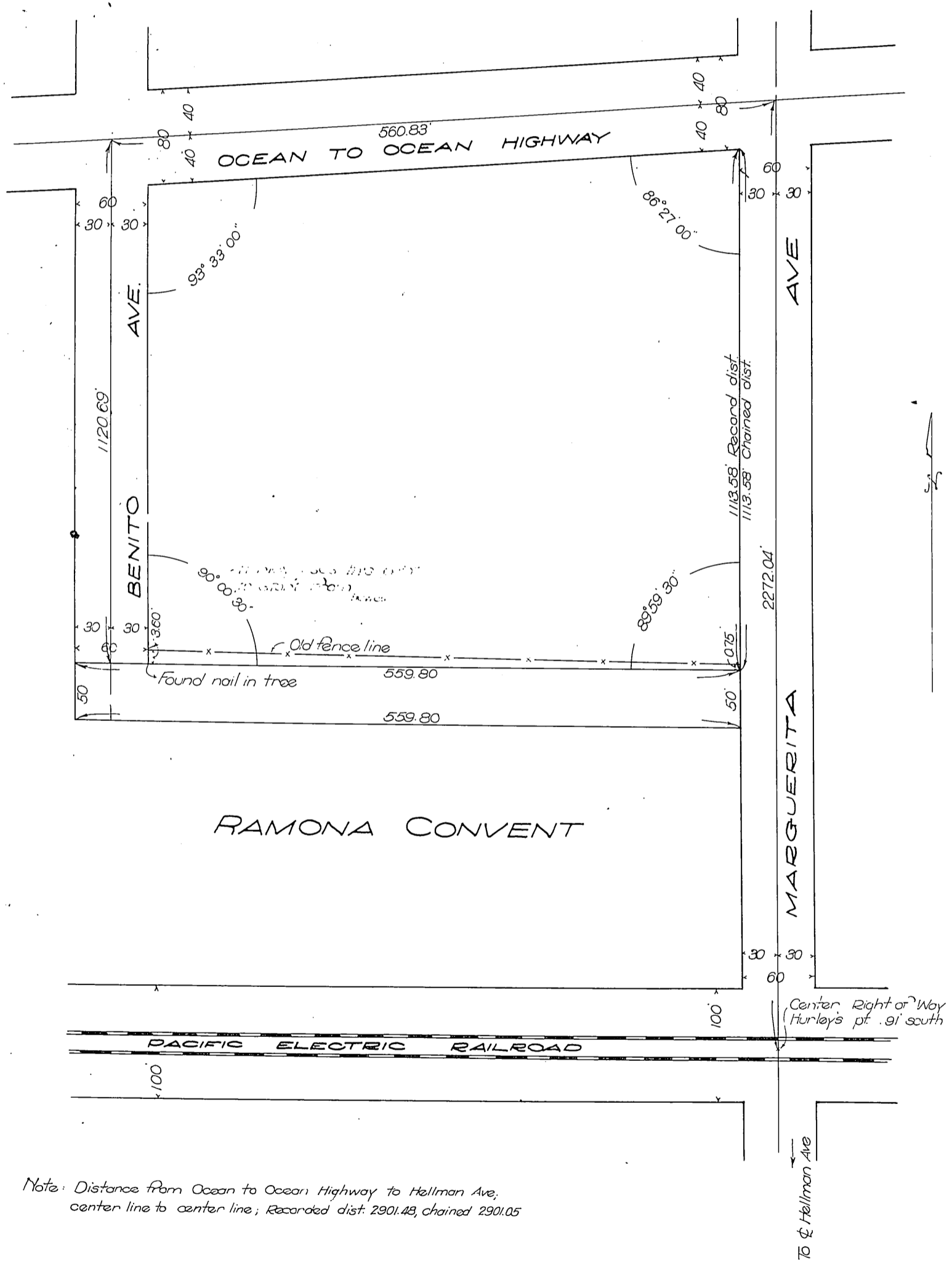


The Sisters of the Sacred Names of Jesus and Mary  
- to -  
City of Alhambra

Map showing location of property of the Ramona  
Convent to be deeded to the City of Alhambra  
in the City of Alhambra County of Los Angeles  
State of California.

Charles E. Hewes  
City Eng'r.



Note: Distance from Ocean to Ocean Highway to Hellman Ave,  
center line to center line; Recorded dist: 2901.48, chained 2901.05

Recorded Apr. 13, 1916

D: 9-80  
D: 33-276

118