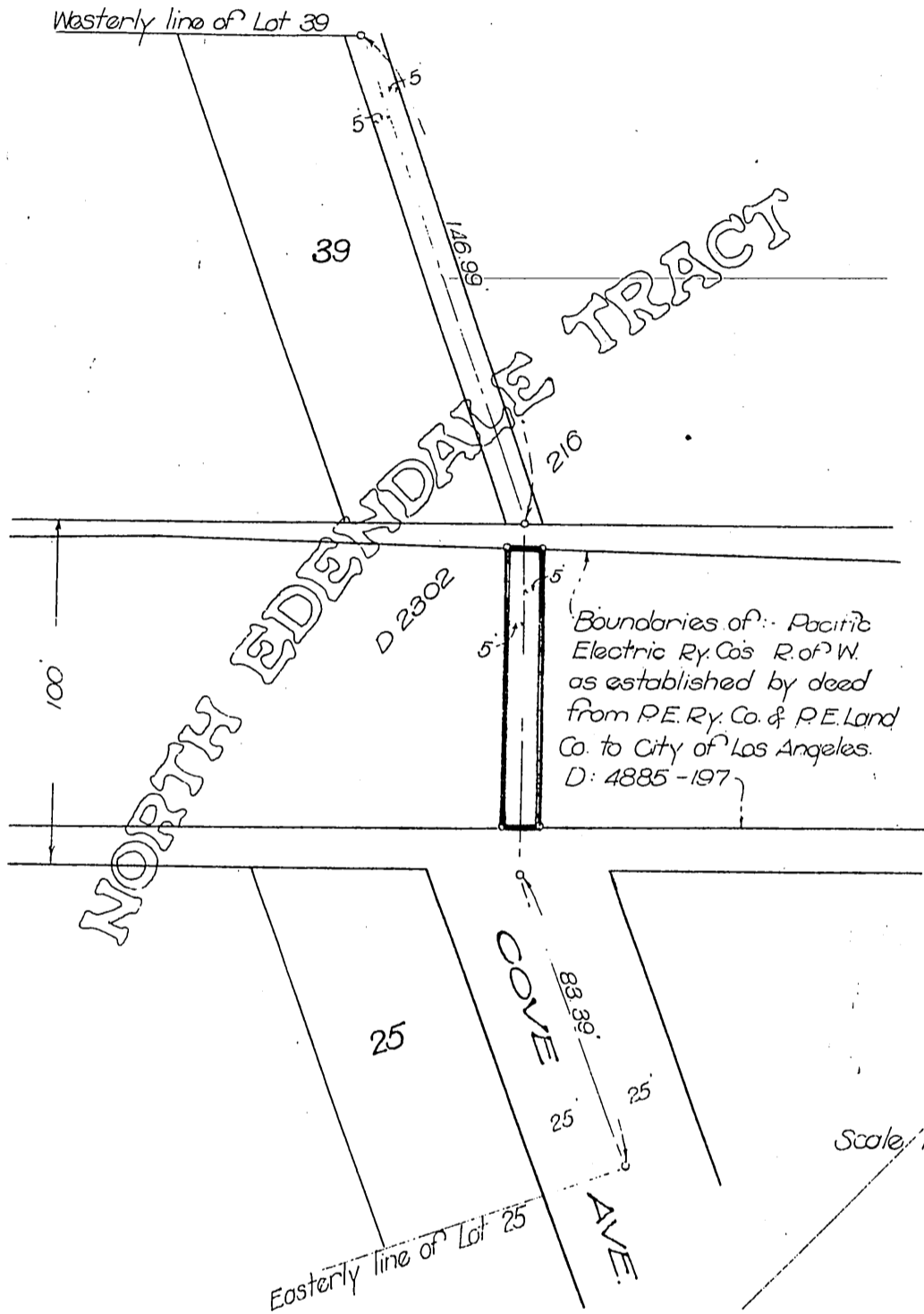


Pacific Electric Railway Company  
~to~  
City of Los Angeles



Boundaries of Pacific Electric Ry. Co's R.O.W. as established by deed from P.E. Ry. Co. & P.E. Land Co. to City of Los Angeles. D: 4885-197

Said Right of Way being a portion of that certain 100' R.O.W. acquired by the Pacific Electric Land Co. D: 2225-215

Scale 1" = 50' Mar 7, 1916

Sewer Easement to L.A. City - Glendale Line

Recorded Apr 6, 1916.