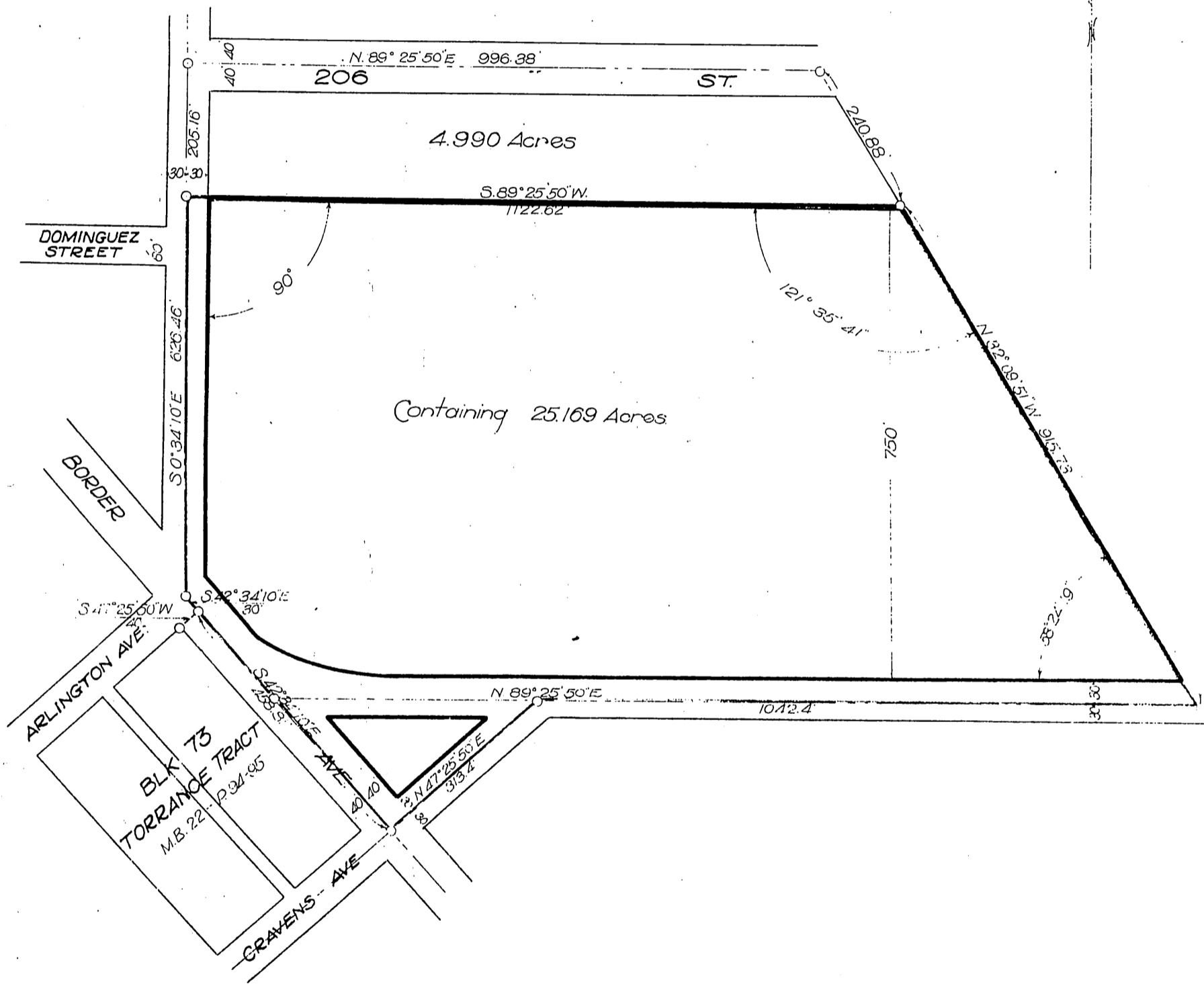


Dominguez Land Corp.  
-to-  
Llewellyn Iron Works



Sketch to accompany deed to Llewellyn Iron Works  
 being a portion of the 730.61 Acre Tract allotted to Susana  
 Dominguez and a portion of the 2279.35 Acre Tract  
 allotted to Ana Josefa Dominguez de Guyan, of the  
 Prairie Tract, Rancho San Pedro Los Angeles Co., Cal.  
 Superior Court Case No 328-1  
 Scale 1" = 200'

Jan. 11, 1913  
 Feb. 2, 1914

No. 1712  
 D. T.

Recorded Jan 11, 1916

A-316

DM 6255-103