

Thomas J. Furlong
Annie M. Furlong
James J. Furlong
Judith M. Furlong Poxon } to ~ City of Vernon

DM-6256-166
85

TRACT No 2533

M. B. 27-45

LOT B

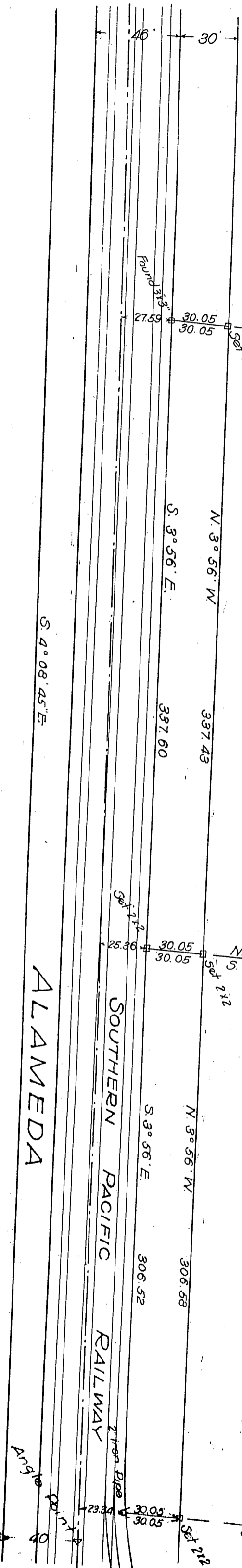
J. BLEONIS

BLINN LUMBER CO.

DAN JOHNSTON

ALAMEDA

SOUTHERN PACIFIC RAILWAY



Angle Point

Angle Point

D. 3-1-15

A-8