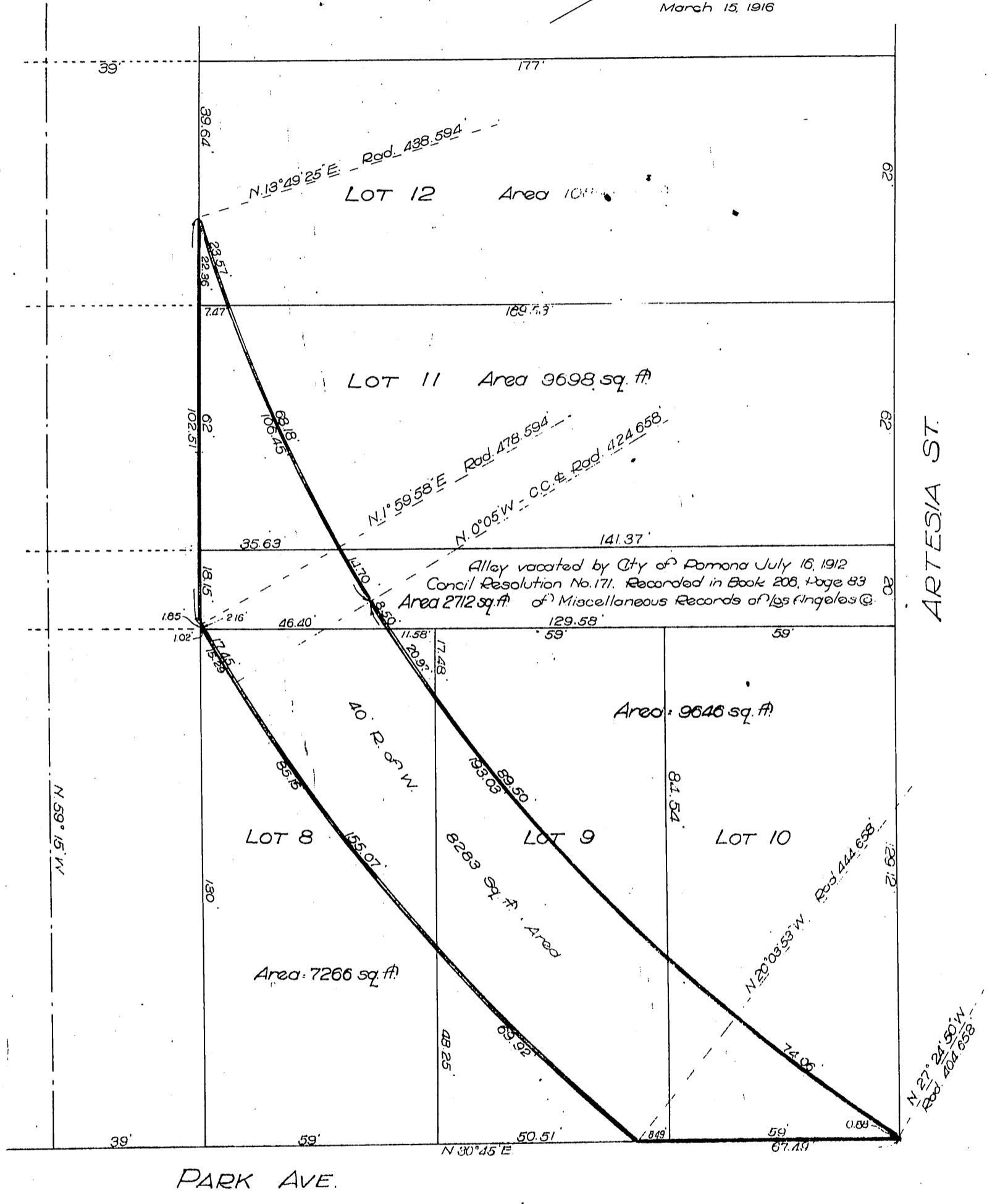


Pacific Electric Land Co.
~to~
Pacific Electric Railway Co.

Scale: 1" = 30'
March 15, 1916



Alley vacated by City of Pomona July 15, 1912
Concil Resolution No. 171. Recorded in Book 208, Page 83
Area 2712 sq. ft. of Miscellaneous Records of Los Angeles Co.

40' R. of W. reserved through Lots 8, 9, 10, 11, 12, and
Vac Alley Palmer & Davney's Subd, M.B. 4-89
M.W.K. 250

Recorded June 16, 1916

A-340