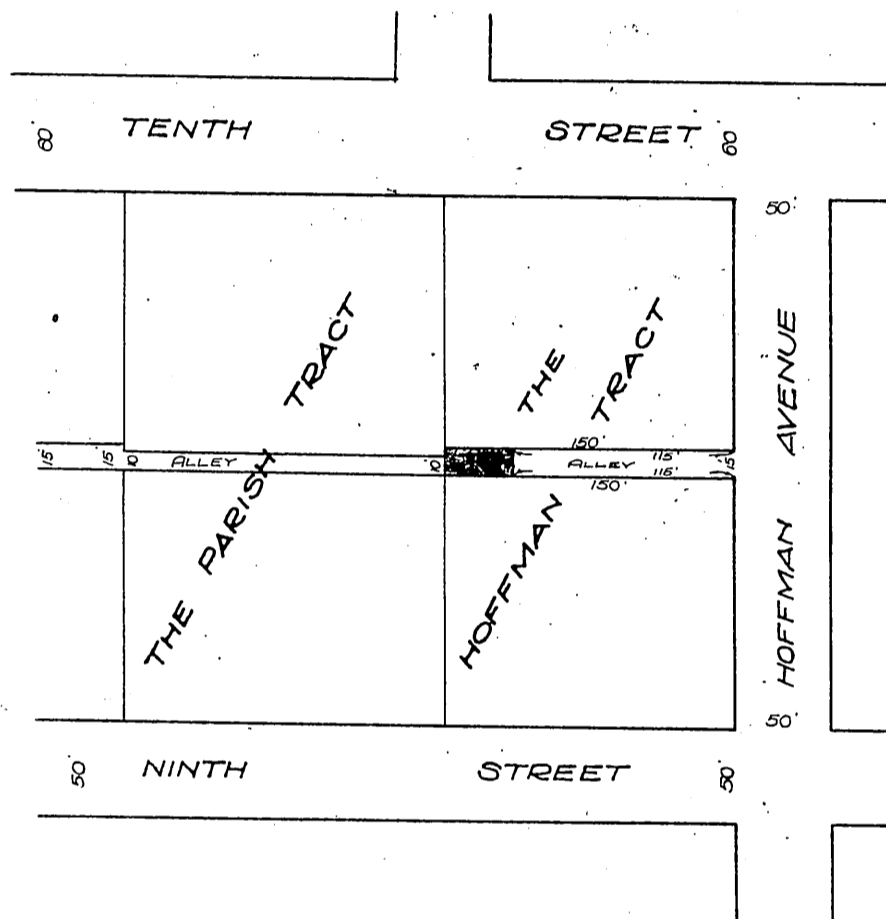


Jennie C. Thomas
-to-
City of Long Beach



SKETCH

showing Lot 15 of THE HOFFMAN TRACT, proposed to be deeded to the CITY OF LONG BEACH for alley purposes.

A. de Ruiz City Engineer

April, 1916
Scale 1"=100'

Approved by the City Engineer
this 25 day of April 1916
A. de Ruiz
City Engineer

Adopted by the Legislative Body of the City
of Long Beach this 28 day of April 1916
H. C. Staughrop
City Clerk

Recorded May 4, 1916

577-30

A-134

D:18-154