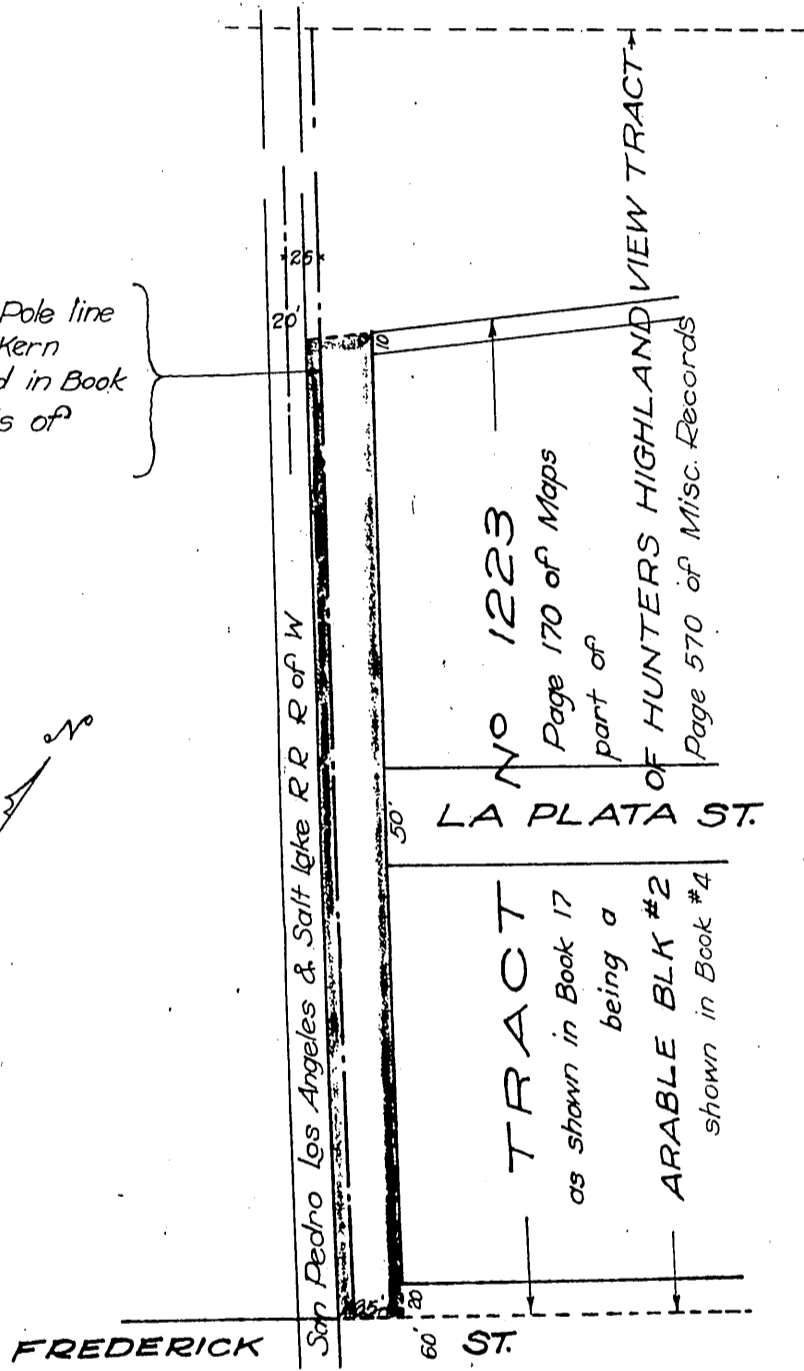


14

Kern River Company.
- to -
The City of Los Angeles.

Center line of Right of Way for Pole line
granted by Mrs. E.M. Cooper to the Kern
River Co. by instrument recorded in Book
1894 Page 225 of Deeds, Records of
Los Angeles. ©

EXHIBIT "A"



See DM 6288-18

Recorded May 12, 1916.
A-224

D: 20-216

D: 6277