

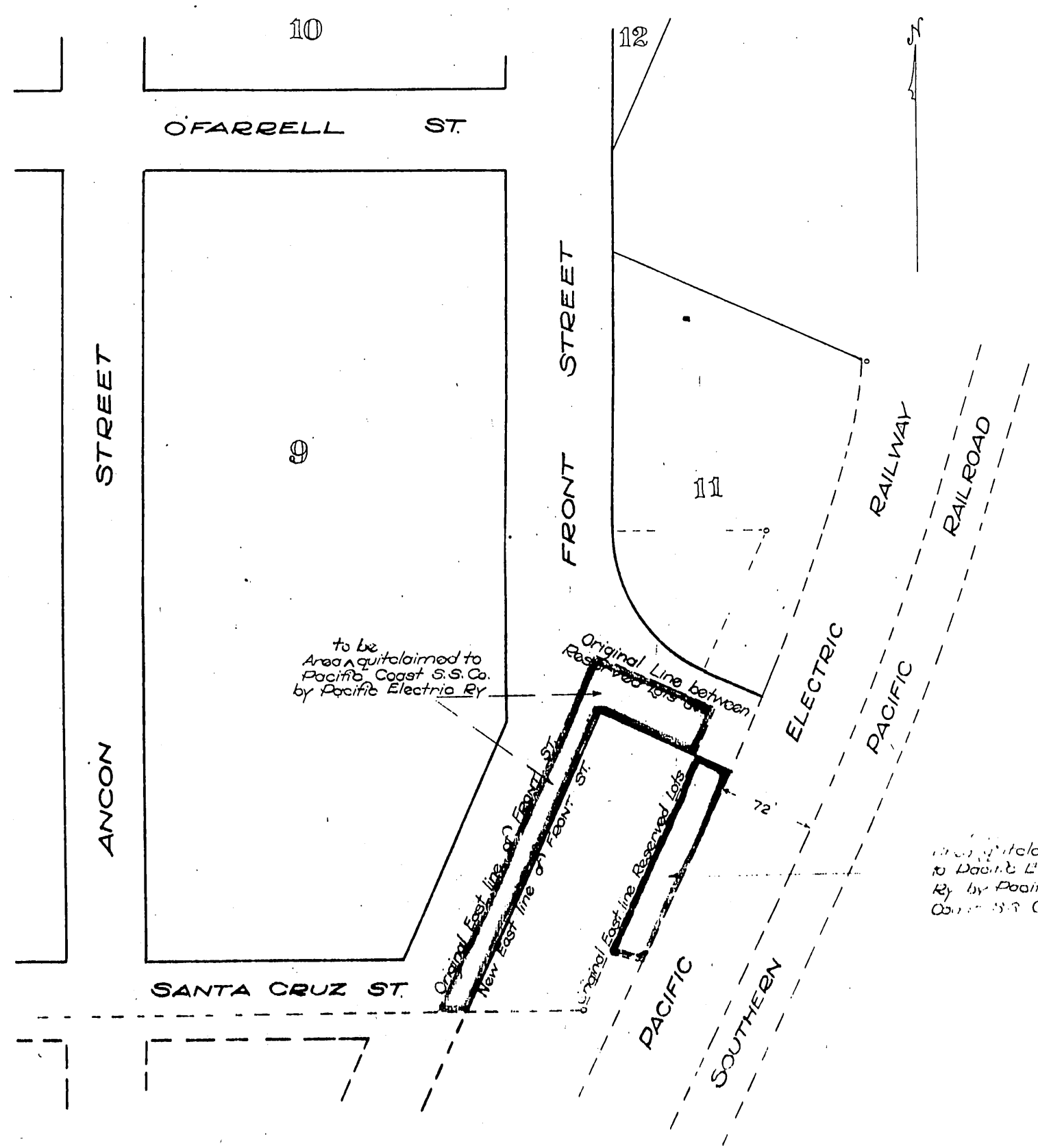
DM 6284-314

Pacific Coast Steamship Co  
to  
Pacific Electric Railway Co

17

MAD  
showing a portion of official plat  
PACIFIC COAST STEAMSHIP ADDITION  
TO LOS ANGELES, CAL.

Being Exhibit "A" referred to in <sup>subsequent</sup> exchange of Quitclaim deeds between Pacific Electric Ry. and Pacific Coast Steam Ship Co.  
Dated April 8 1916



Recorded July 3, 1916  
A.O.L.