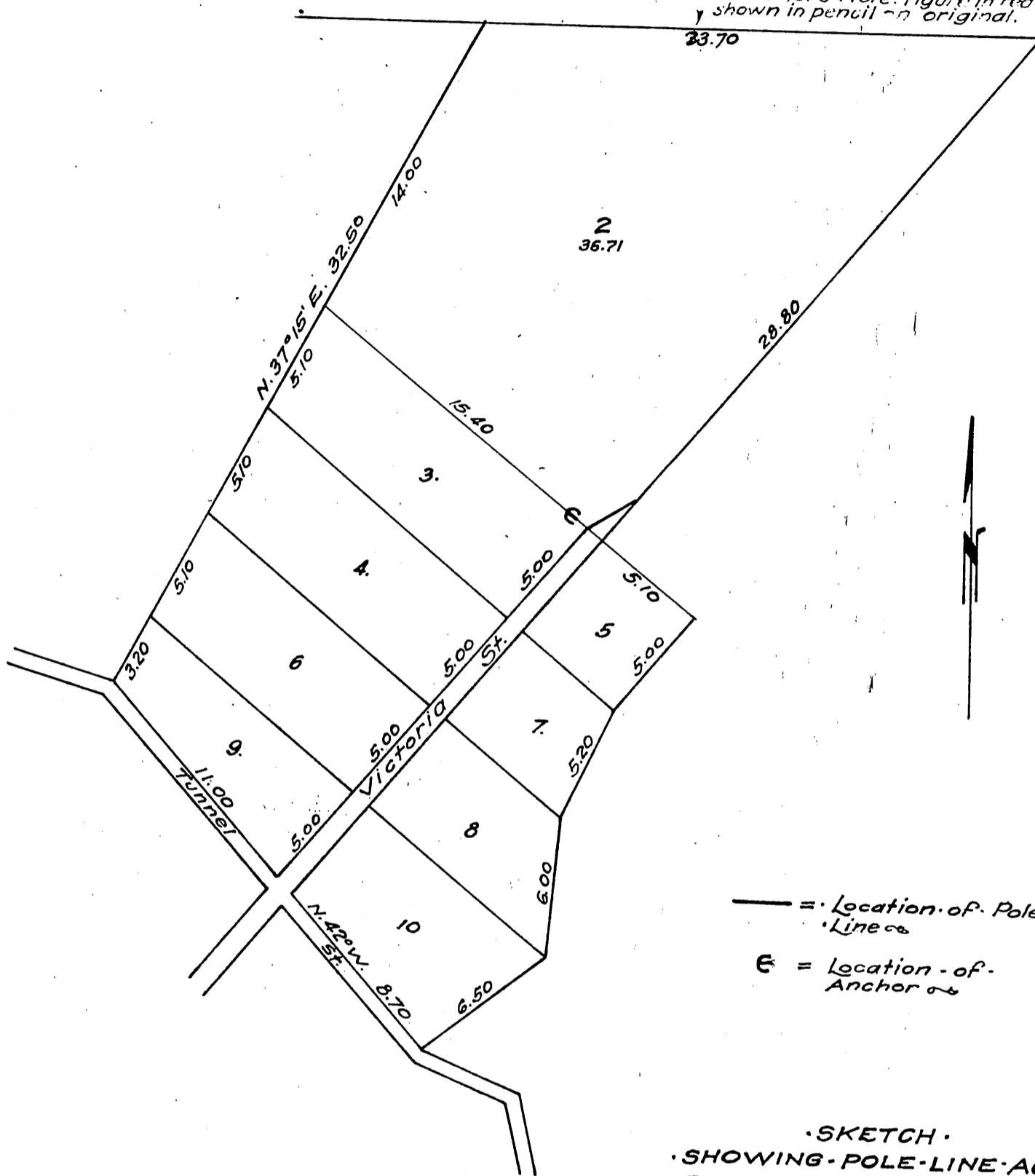


Bertha S. Morris } 20  
Rufus D. Morris } to Pacific Light & Power Corp.

1013-B-98

Recorders Note: Figure in red ink  
shown in pencil on original.



— = Location of Pole Lines  
 E = Location of Anchor

SKETCH  
 SHOWING POLE LINE ACROSS  
 PROPERTY OF BERTHA S. &  
 RUFUS D. MORRIS OF  
 EAGLE ROCK DISTRICT  
 PACIFIC LIGHT and POWER CORP.  
 LOS ANGELES, CALIFORNIA

By \_\_\_\_\_ Traced by W. E. L.  
 Checked S. N. B. Scale Dim. = chain  
 App. CEH Date Sept. 13th 1913.

1013-B-98