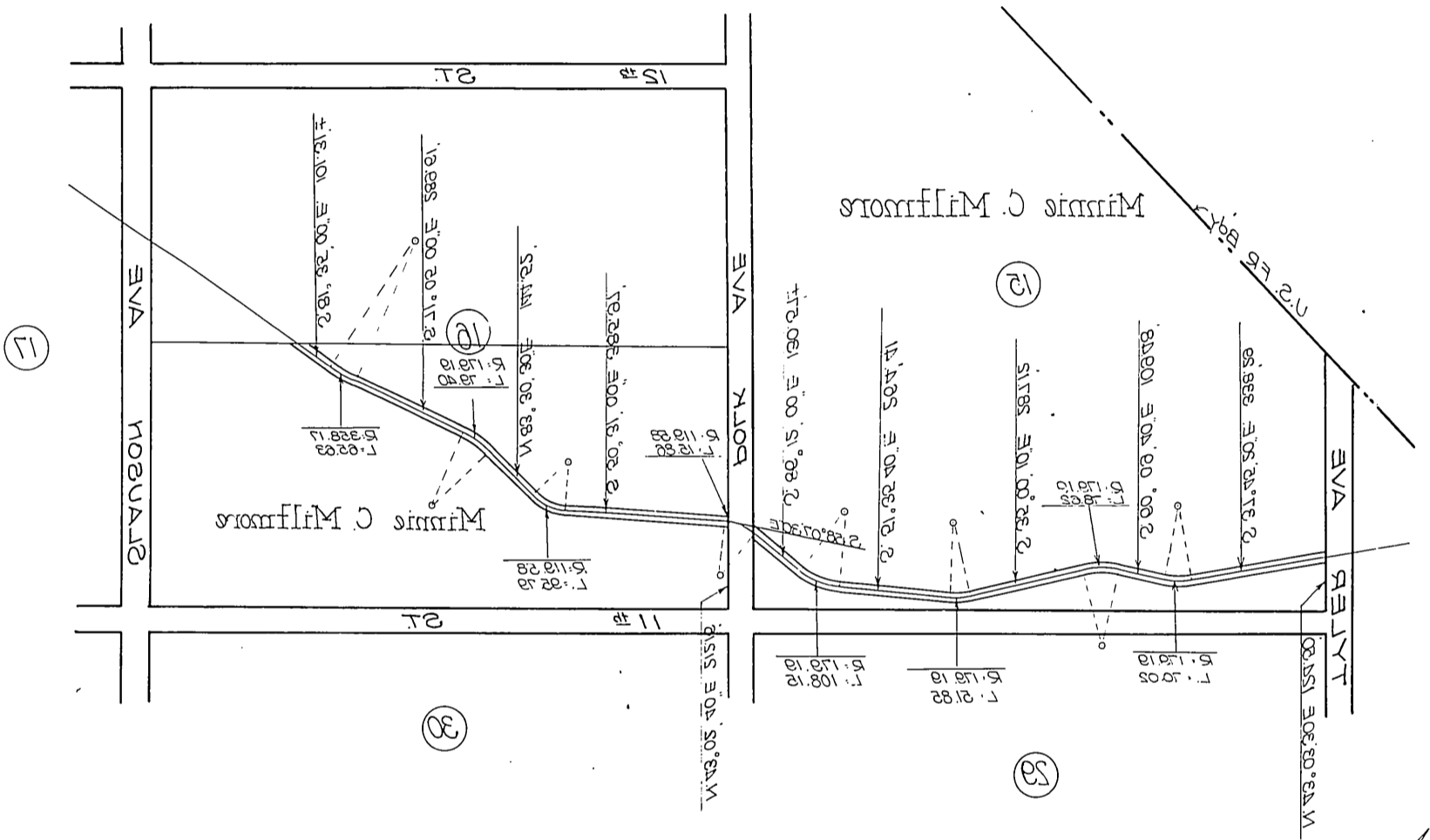


Recorded Sept. 23, 1910

Scale 1" = 400'  
and 1910  
M.R. Book 37 pages 2-16, Los Angeles County  
through blocks 15 and 16 of Macloy Rancho  
Plot showing Right of Way for Macloy High Line



ENGINEERING DEPARTMENT  
 WATER WORKS AND SUPPLY  
 BUREAU OF  
 DEPARTMENT OF PUBLIC SERVICE  
 CITY OF LOS ANGELES

The City of Los Angeles  
 -to-  
 Minnie C. Millmore

6310-270

47