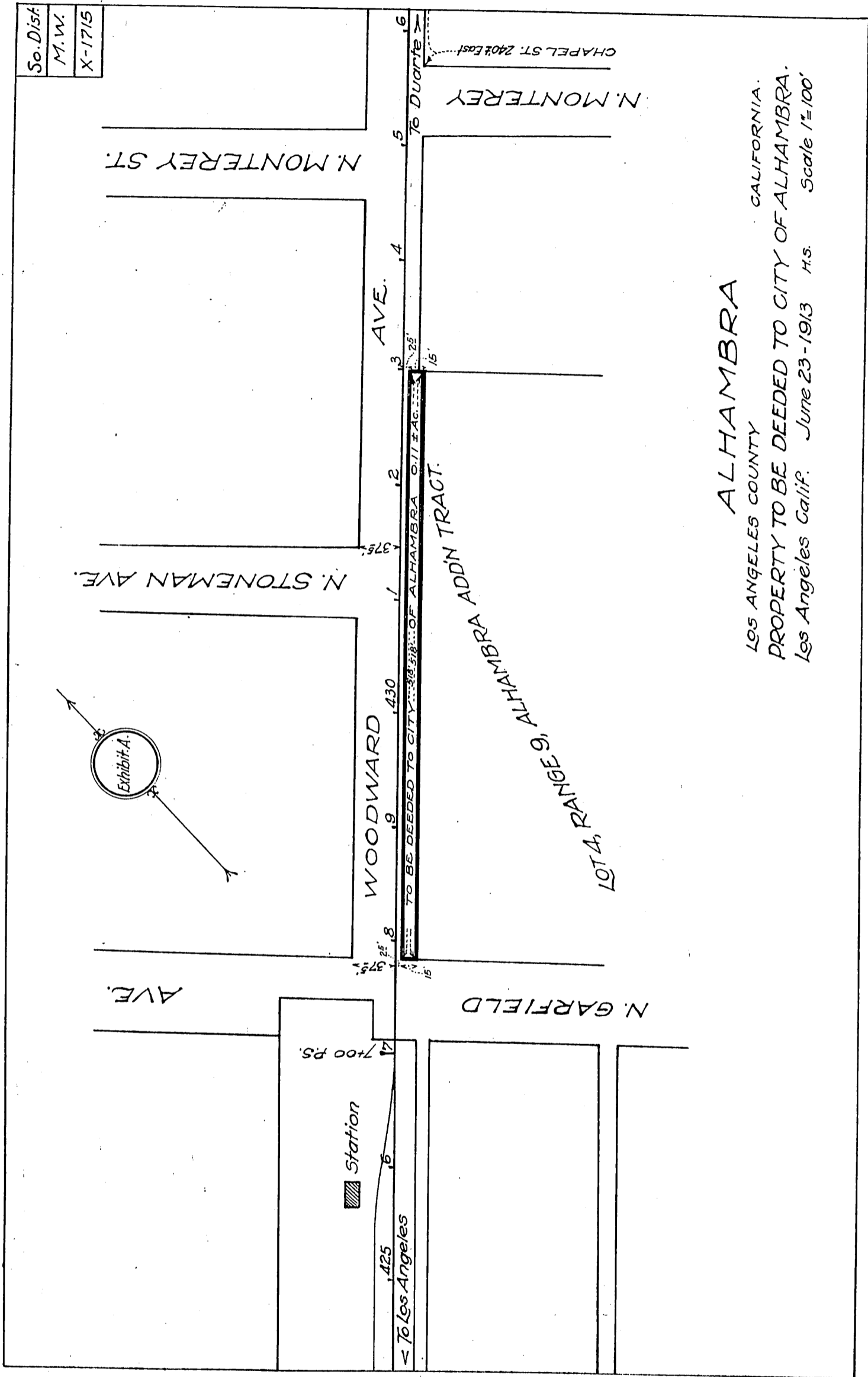


Southern Pacific Railroad Co } 48  
Southern Pacific Co } to City of Alhambra.



ALHAMBRA  
 LOS ANGELES COUNTY CALIFORNIA.  
 PROPERTY TO BE DEEDED TO CITY OF ALHAMBRA.  
 Los Angeles Calif. June 23-1913 H.S. Scale 1"=100'

D: 9-91 A-197

Recorded - Aug. 24, 1916.

8